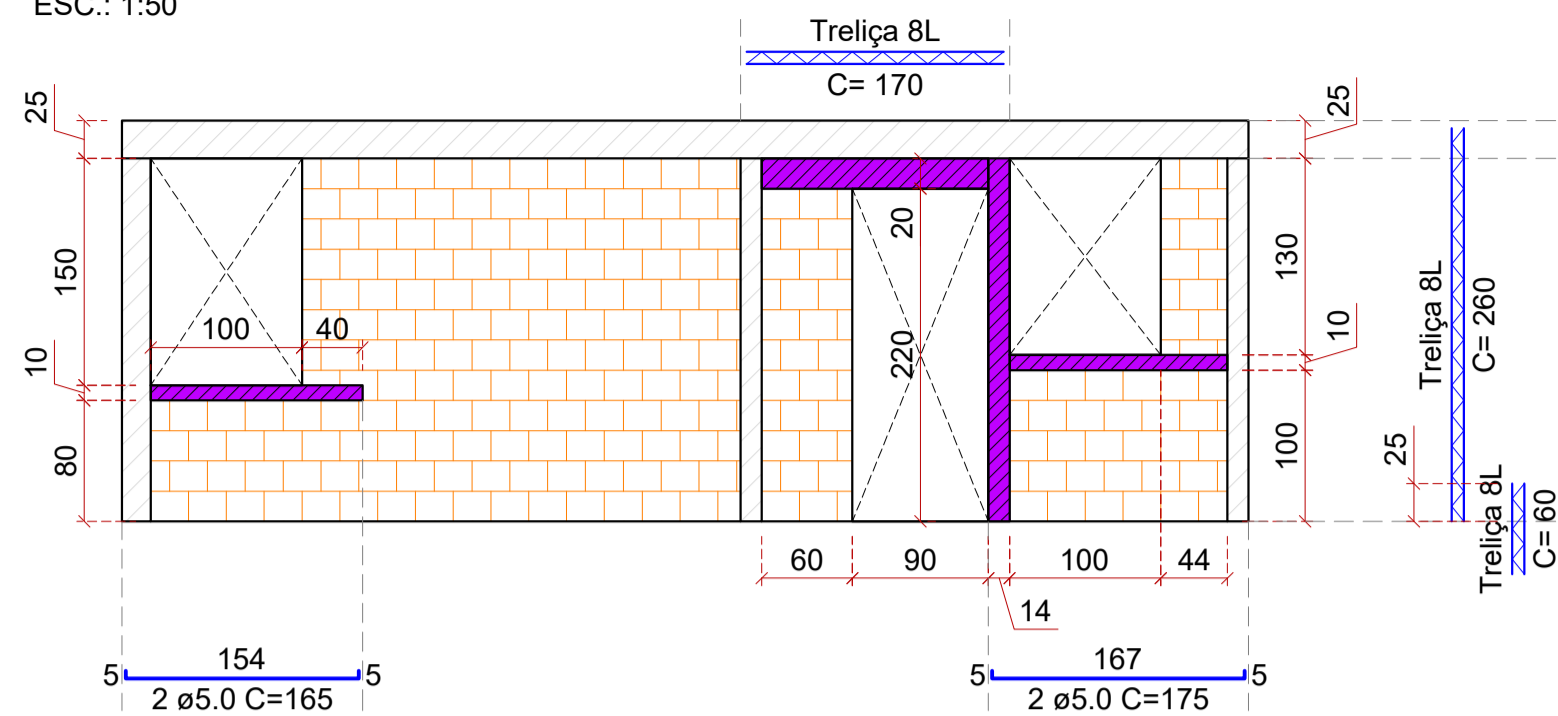
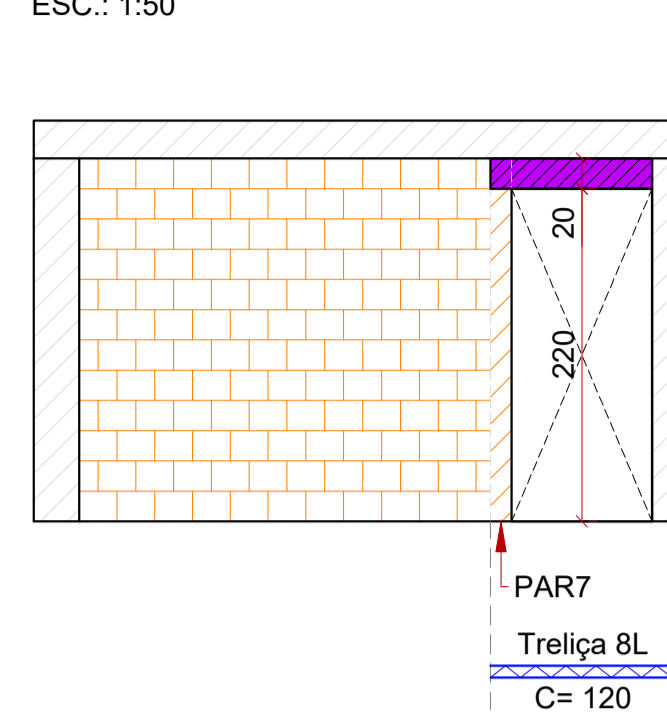


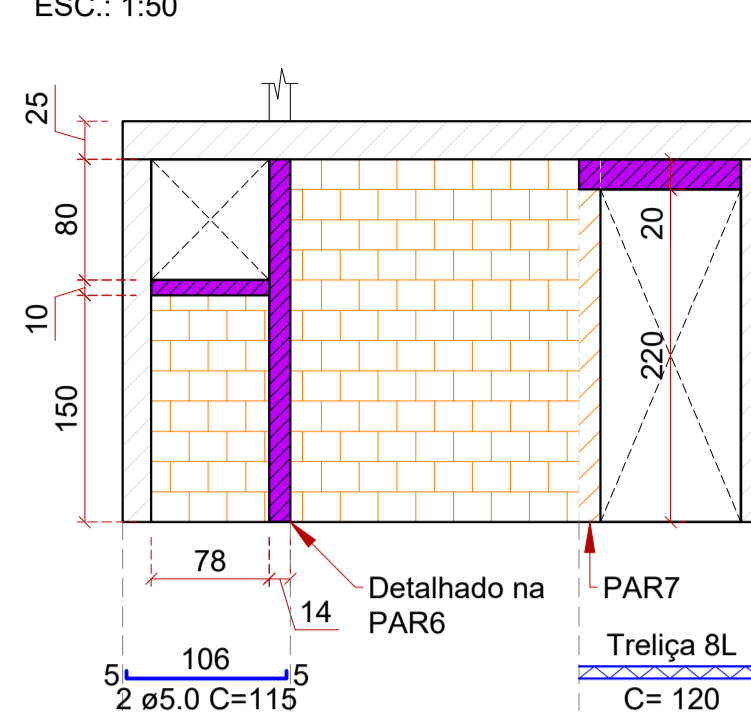
PAR1
ESC.: 1:50



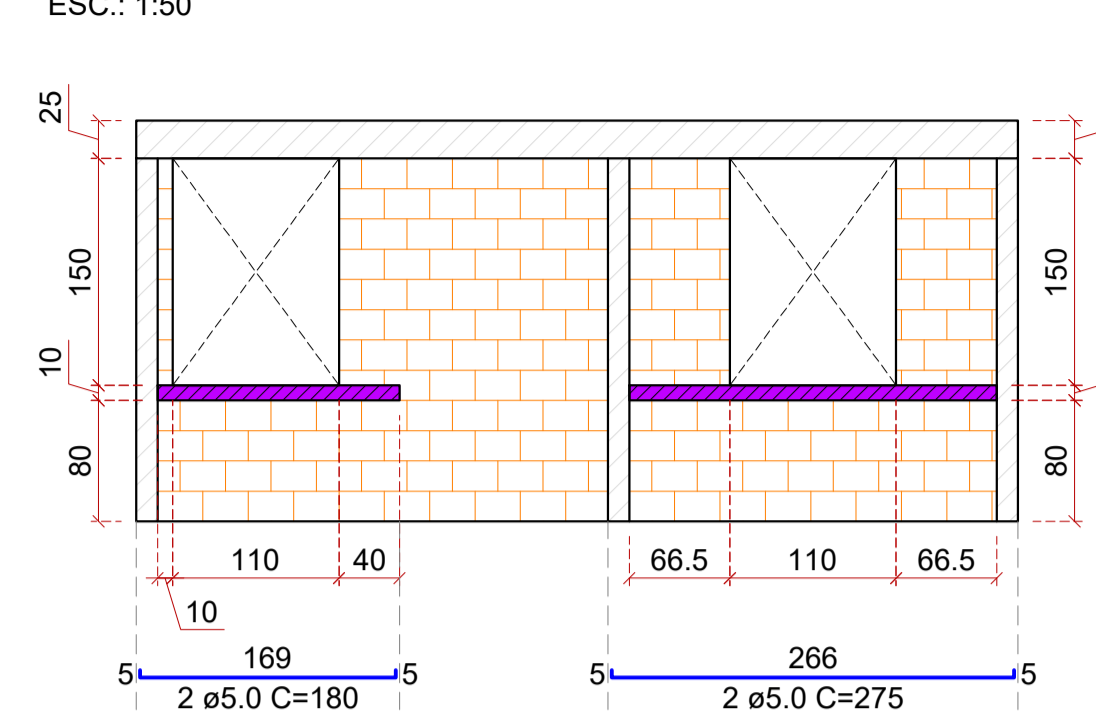
PAR2
ESC.: 1:50



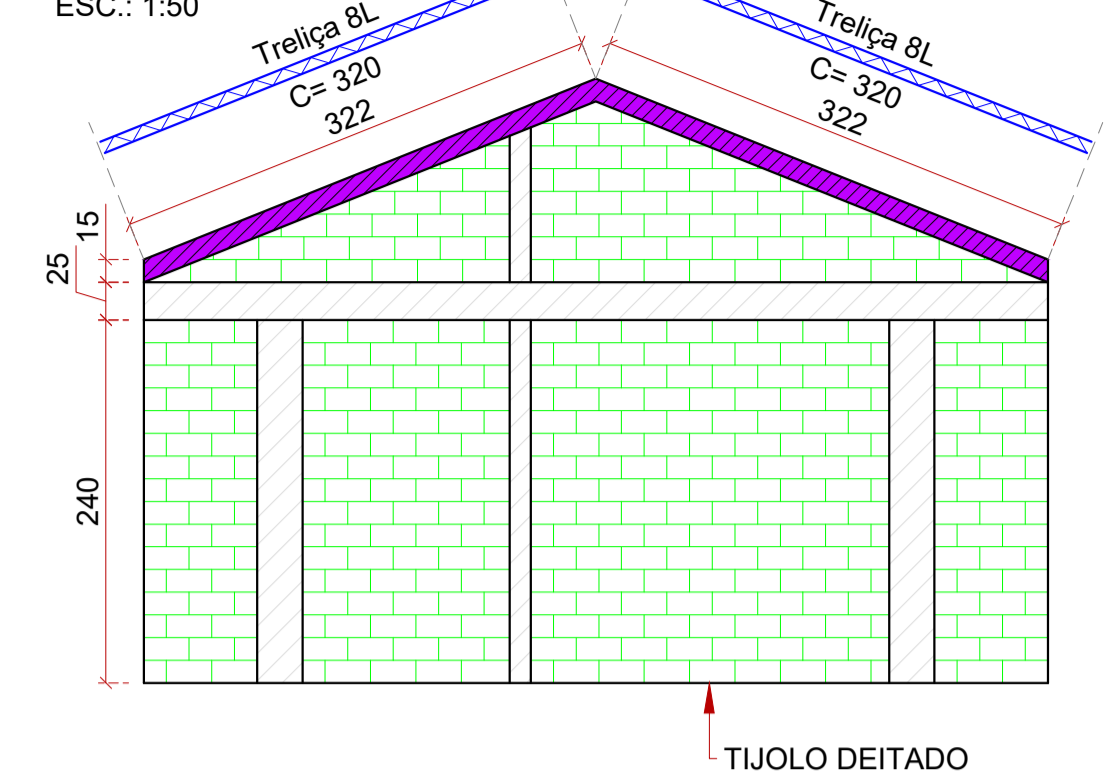
PAR3
ESC.: 1:50



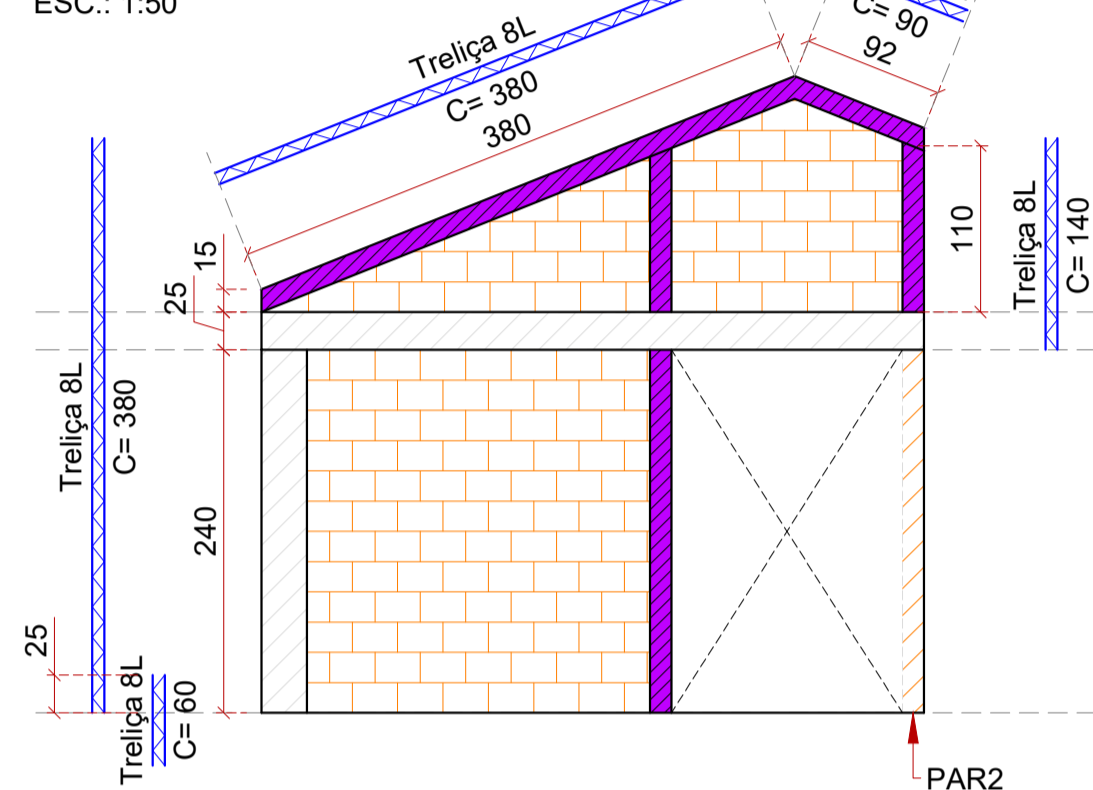
PAR4
ESC.: 1:50



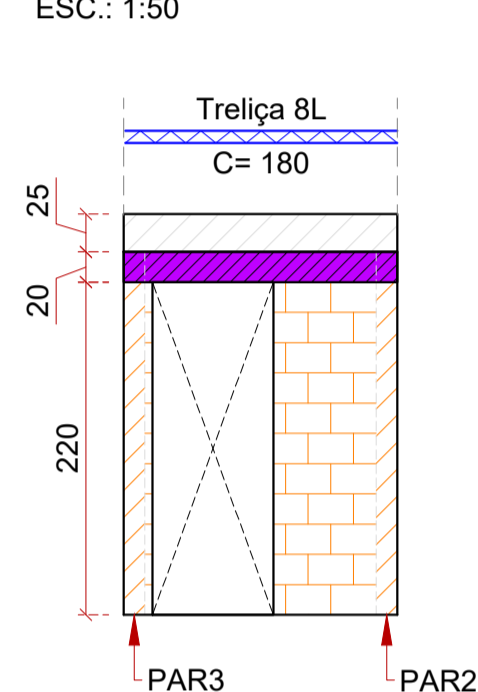
PAR5
ESC.: 1:50



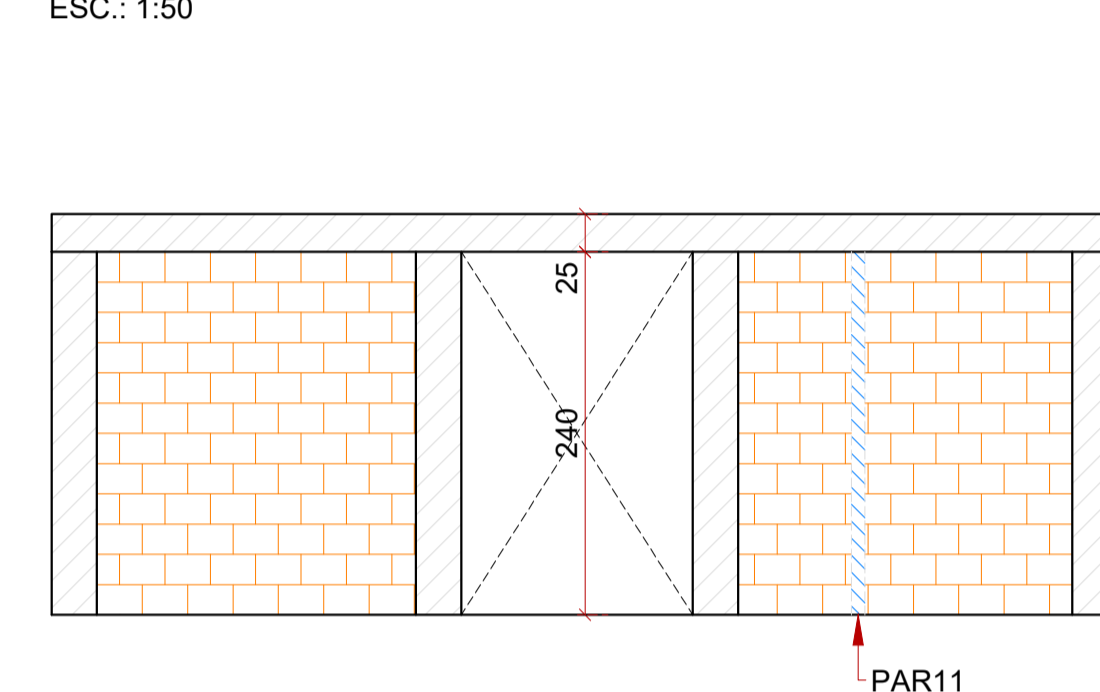
PAR6
ESC.: 1:50



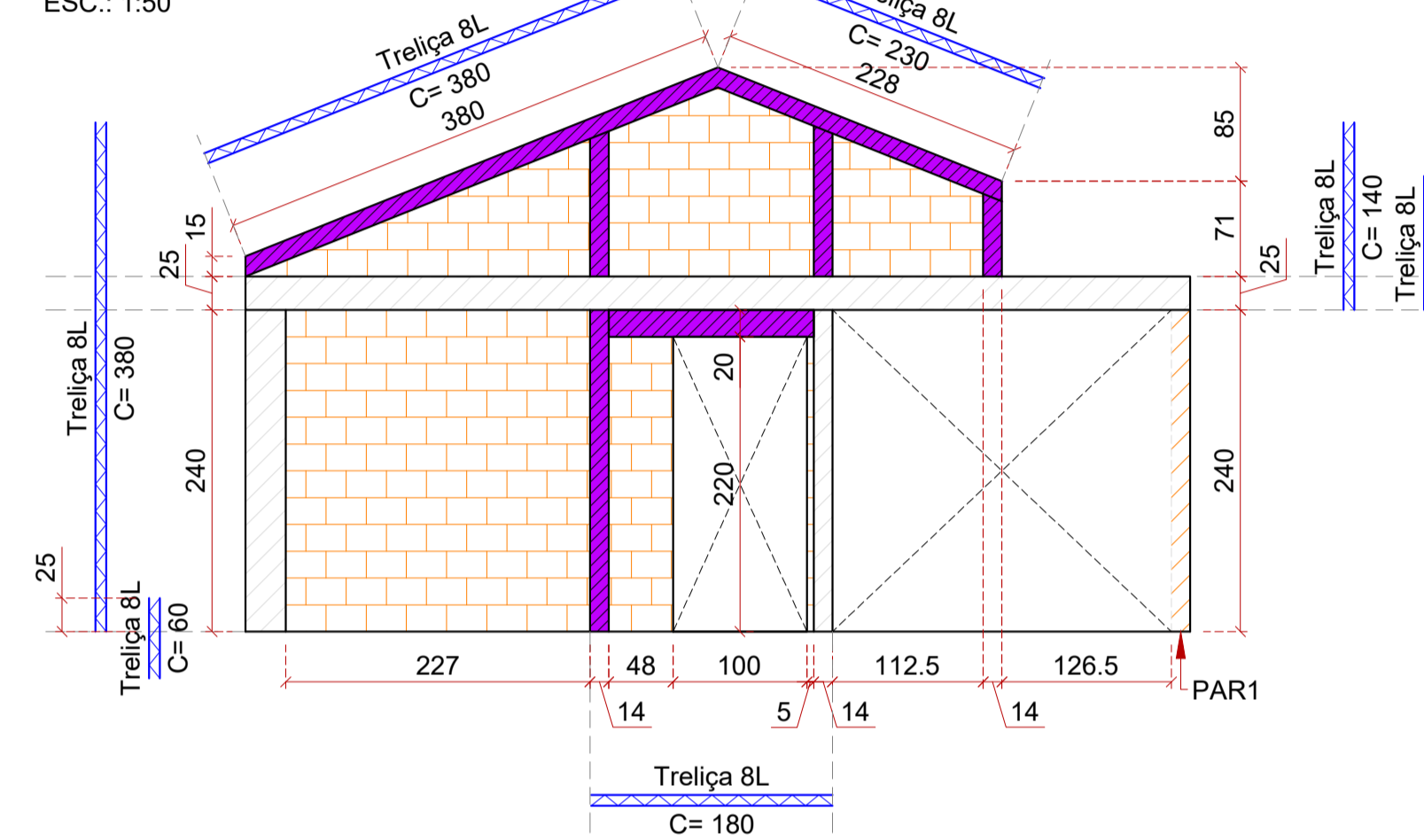
PAR7
ESC.: 1:50



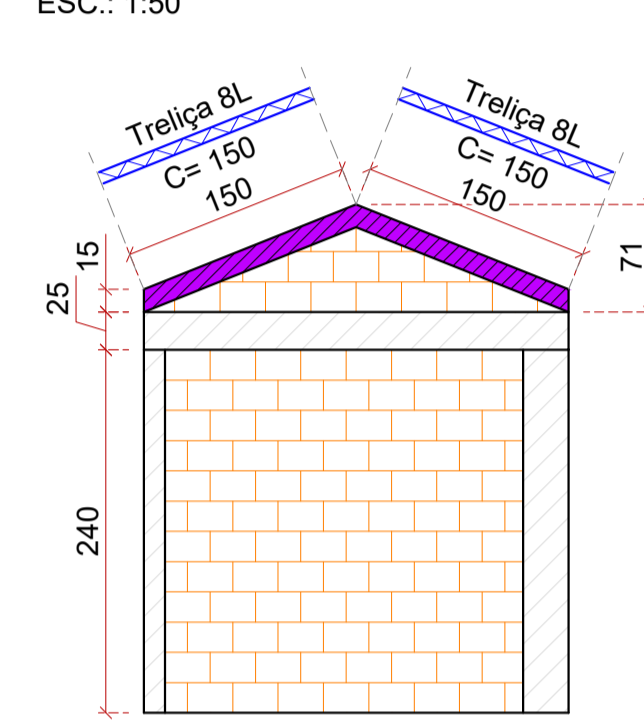
PAR8
ESC.: 1:50



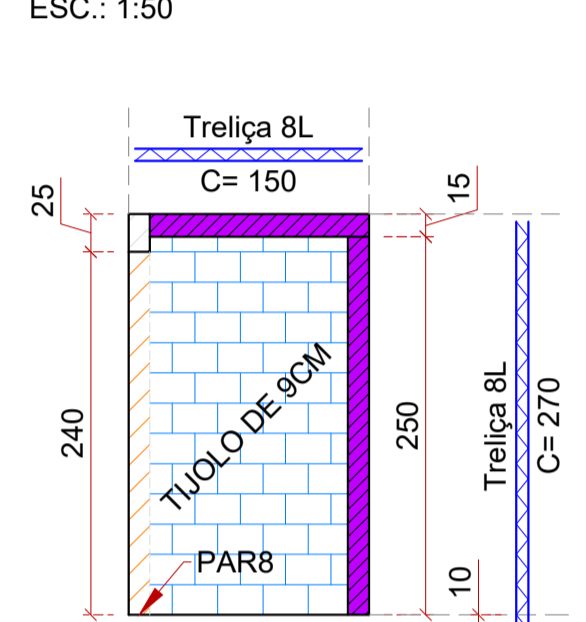
PAR9
ESC.: 1:50



PAR10
ESC.: 1:50



PAR11
ESC.: 1:50



DETALHAMENTO PAREDES (FOLHA ÚNICA)

ESCALA INDICADA

Resumo do aço

AÇO	DIAM (mm)	C.TOTAL (m)	QUANT (Barras)	PESO (kg)
CA60	5.0	18.2	11	2.8
Trelça	TL8	47.9	8 (6m)	35.3

Volume de concreto (C-25) = 2.48 m³
Área de forma = 15.28 m²

Relação do aço - Pilares

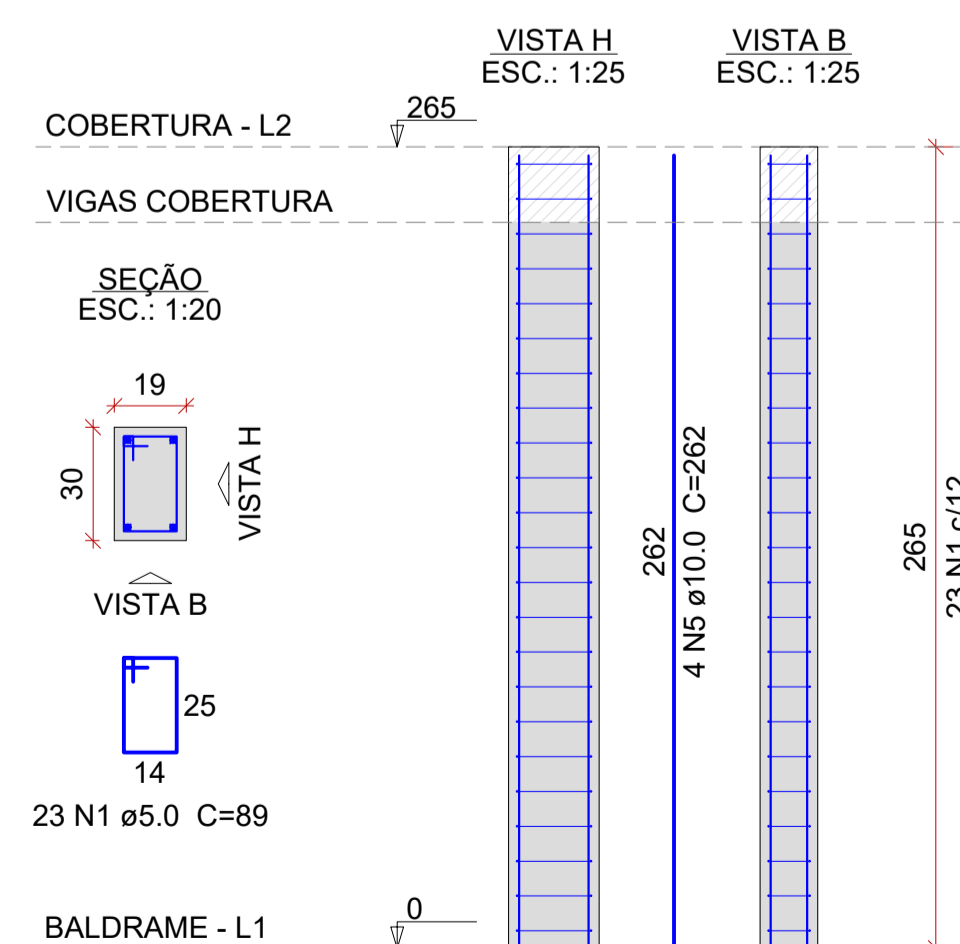
AÇO	N	DIAM (mm)	QUANT	C.UNIT (cm)	C.TOTAL (cm)
CA60	1	5.0	46	89	4094
	2	5.0	193	79	15247
	3	5.0	23	177	4071
	4	5.0	46	24	1104
CA50	5	10.0	44	262	11528
	6	10.0	4	377	1508

Resumo do aço

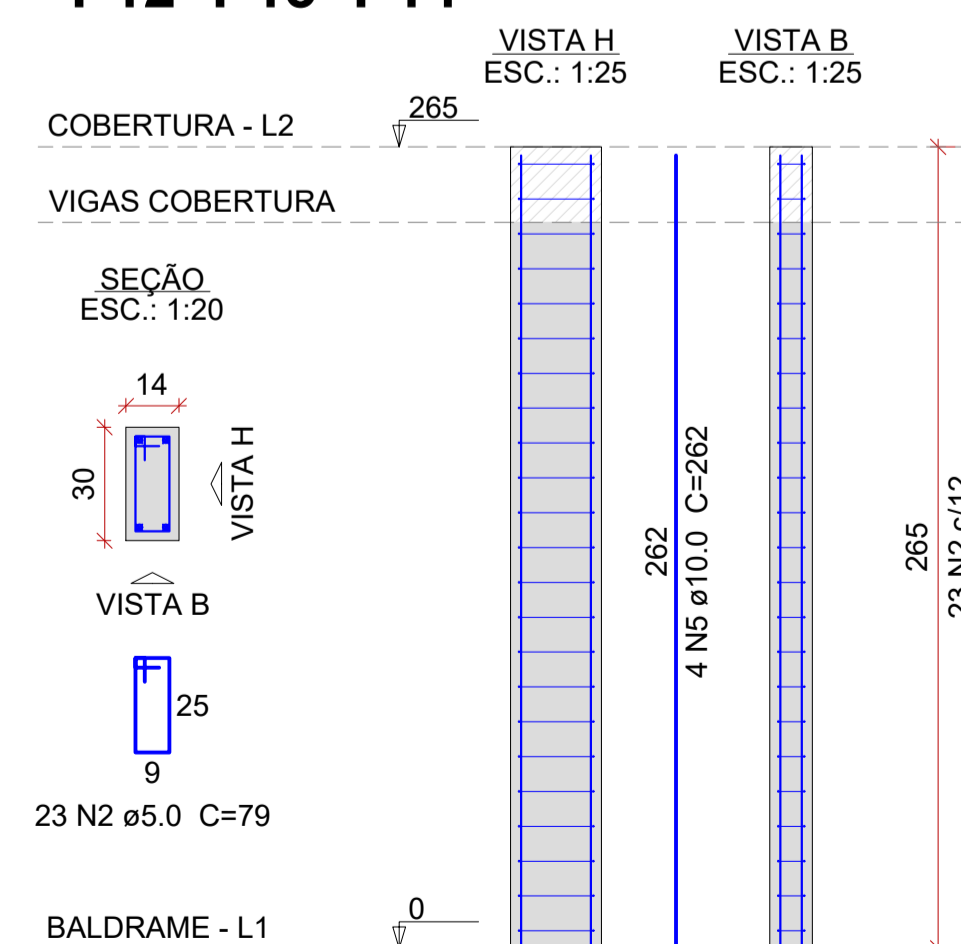
AÇO	DIAM (mm)	C.TOTAL (m)	QUANT (Barras)	PESO (kg)
CA50	10.0	130.4	11	80.4
CA60	5.0	245.2	21	37.8

Volume de concreto (C-25) = 1.25 m³
Área de forma = 15.96 m²

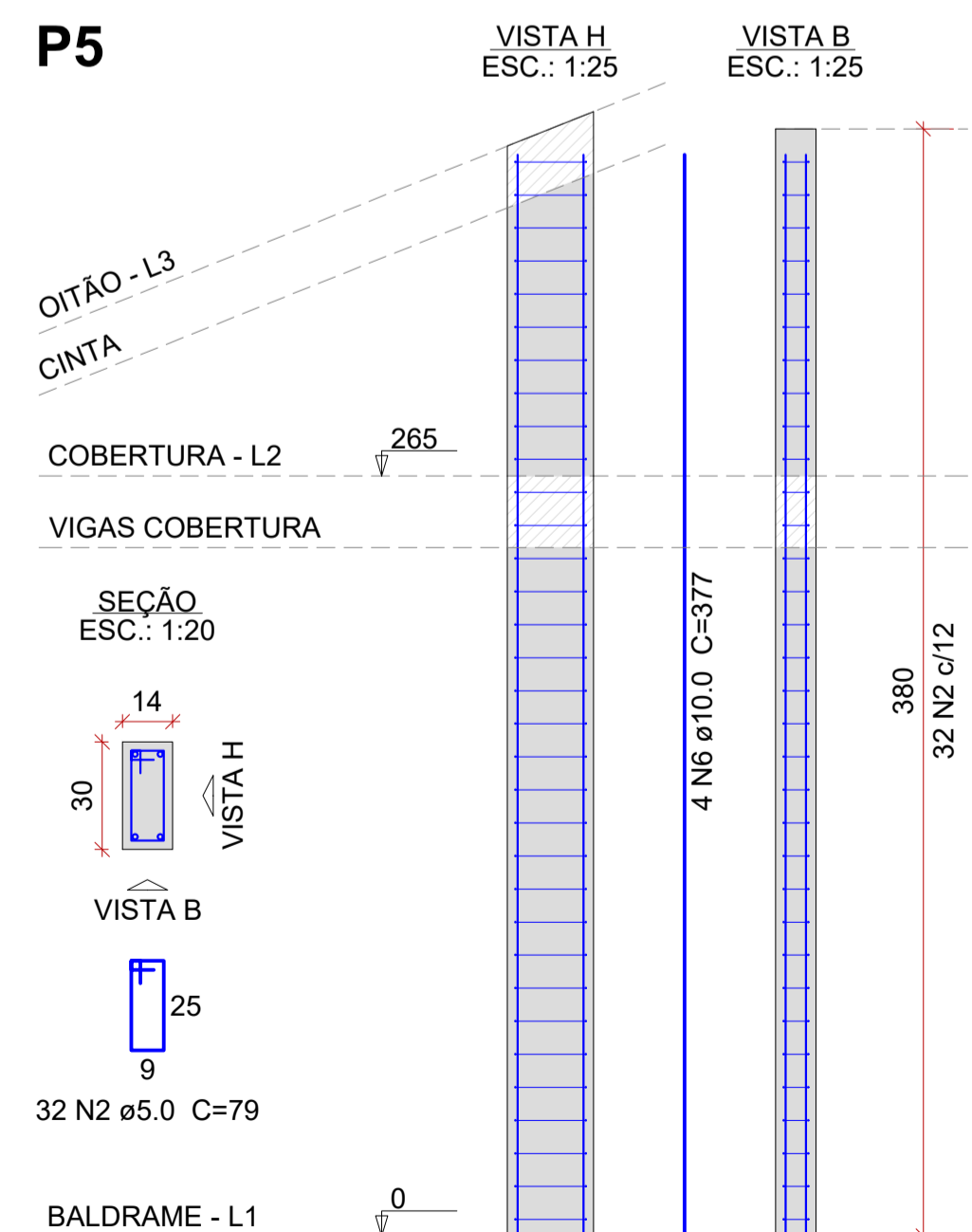
P1=P9



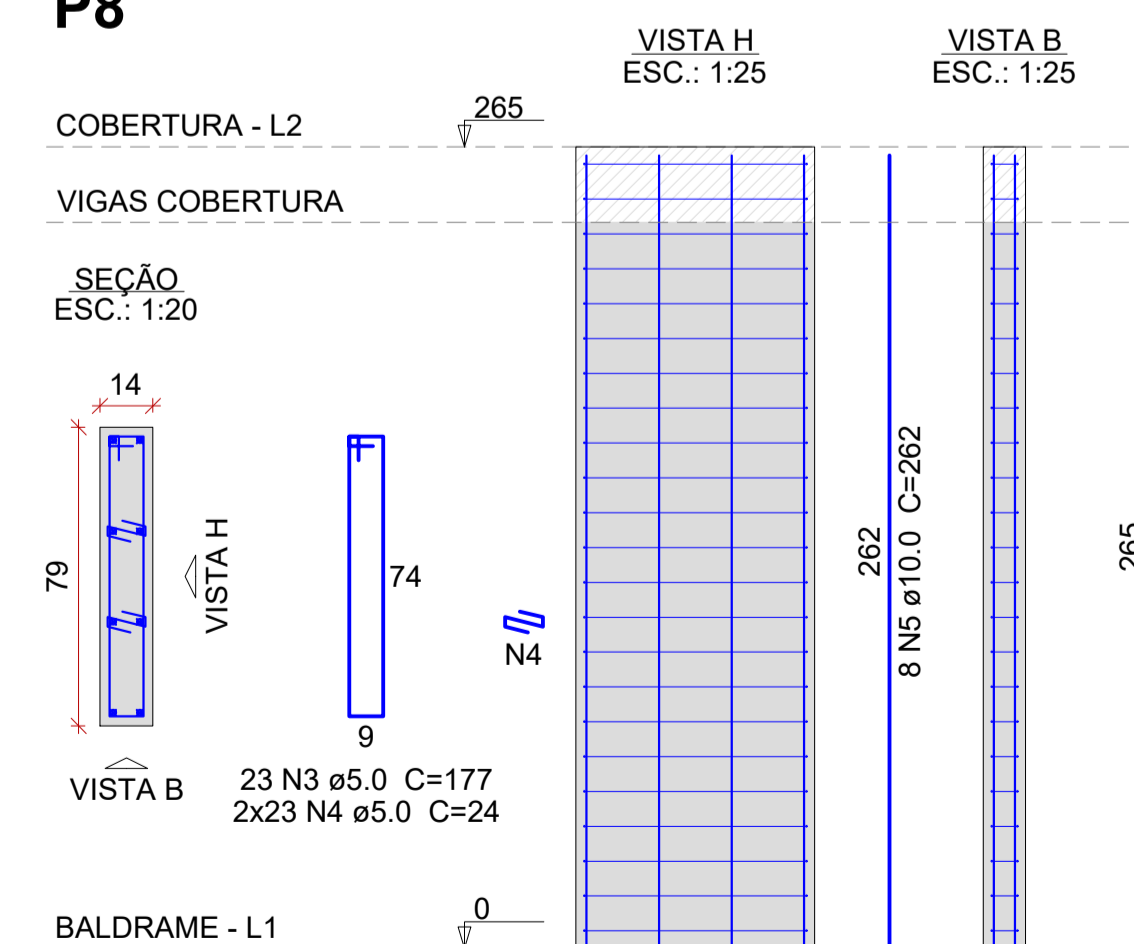
**P3=P4=P7=P11=
=P12=P13=P14**



P5



P8



DETALHAMENTO PILARES (FOLHA ÚNICA)

ESCALA INDICADA

REVISÃO: R00 DATA: 03/2024 DESCRIÇÃO: EMISSÃO INICIAL

AMAVI
ASSOCIAÇÃO DOS MUNICÍPIOS DO ALTO VALE DO ITAJAI

(47) 3531-4242
amavi@amavi.org.br
amavi.org.br
f @amavi_altovale
Rua XV de Novembro, 737
Centro, Rio do Sul/SC
89160-015

PROPRIETÁRIO / CONTRATANTE: **PREFEITURA MUNICIPAL DE AGROLÂNDIA**
CNPJ: 83.102.582/0001-44

ASSINATURA:

RESPONSÁVEL TÉCNICO PROJETO: **EDUARDO FRANCISCO SILVA DE FIGUEIREDO**
ENGENHEIRO CIVIL - CREA: 187051-8-SC

ASSINATURA:

PROJETO: **ESTRUTURAL**

OBRA: UNIDADE RESIDENCIAL UNIFAMILIAR

LOGRADOURO: RUA PRESIDENTE GETÚLIO VARGAS BAIRRO: CENTRO N°: S/N

MUNICÍPIO: AGROLÂNDIA UF: SC CEP: 88420-000

ÁREA EDIFICAÇÃO: 47,74 m²

CONTEÚDO: DETALHAMENTO PAREDES
DETALHAMENTO PILARES

ESCALA: INDICADA DATA: MAR/2024

CÓDIGO AMAVI: 3343

DESENHISTA: EDUARDO FIGUEIREDO

EST05/07

TODOS OS DIREITOS RESERVADOS. PROIBIDA A REPRODUÇÃO PARCIAL OU TOTAL. DESENHO VÁLIDO SOMENTE ASSINADO PELO RESPONSÁVEL DO PROJETO.