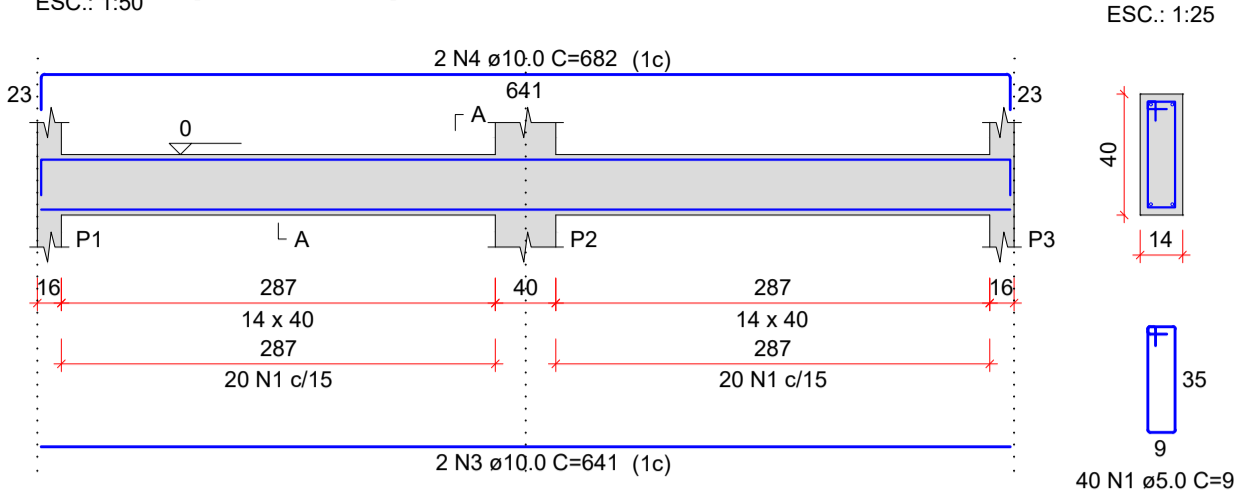
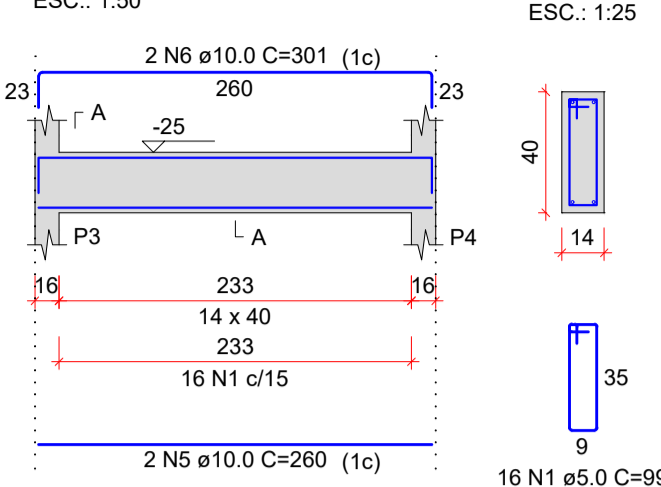


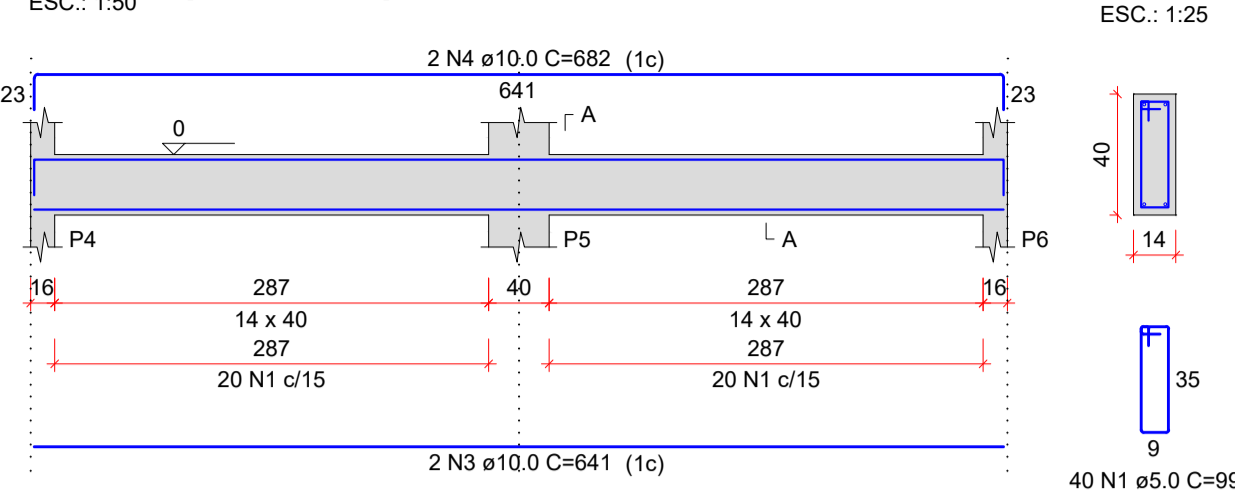
V100 (14 x 40)



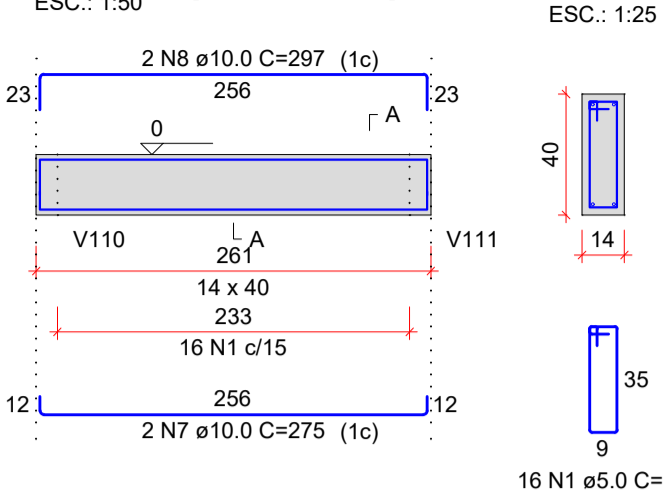
V101 (14 x 40)



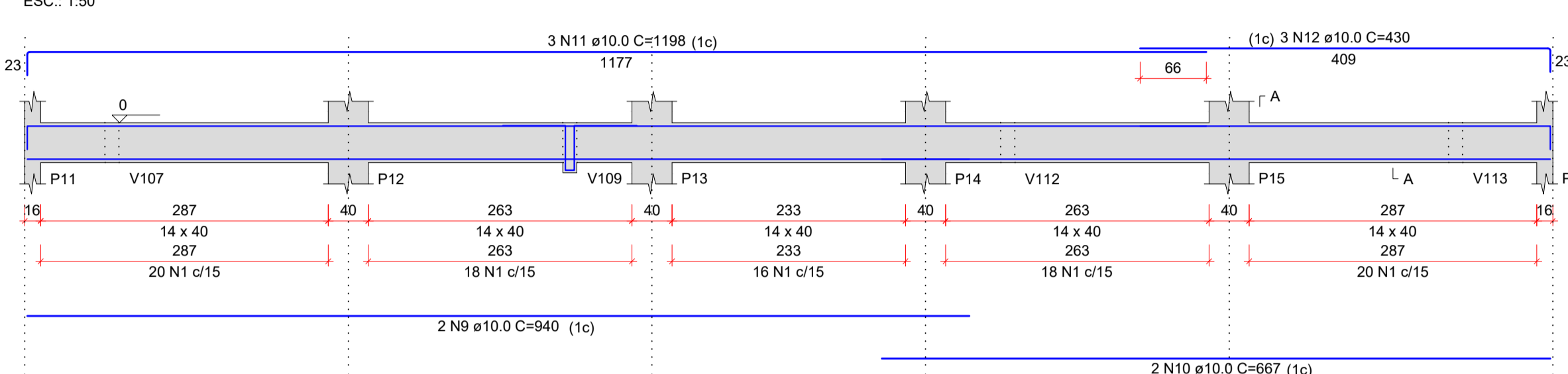
V102 (14 x 40)



V103 (14 x 40)

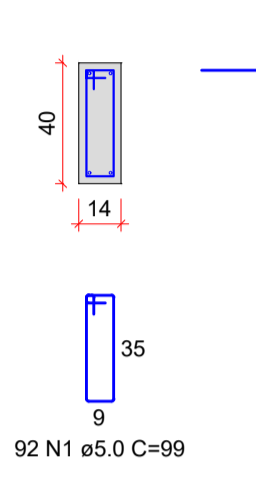


V104 (14 x 40)

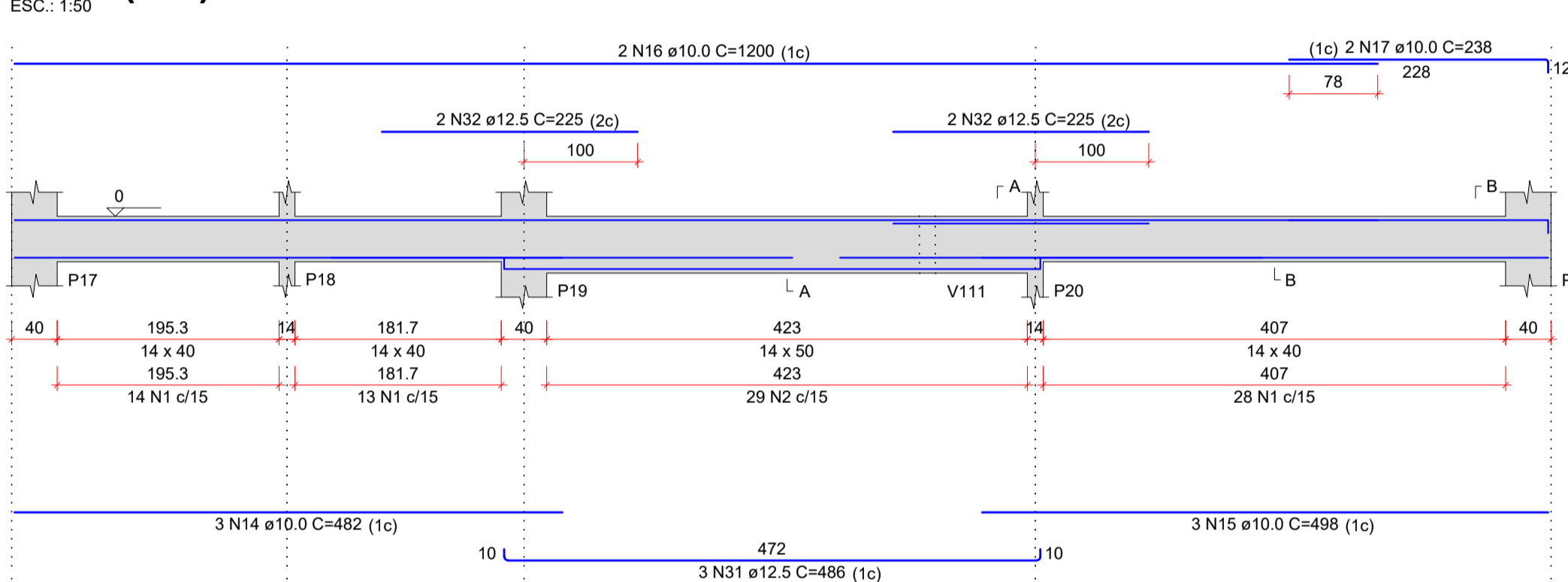


SEÇÃO A-A

SUSPENSÃO V109

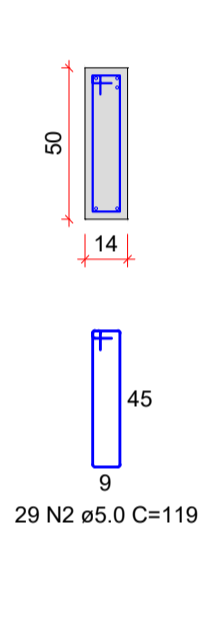


V105 (var)

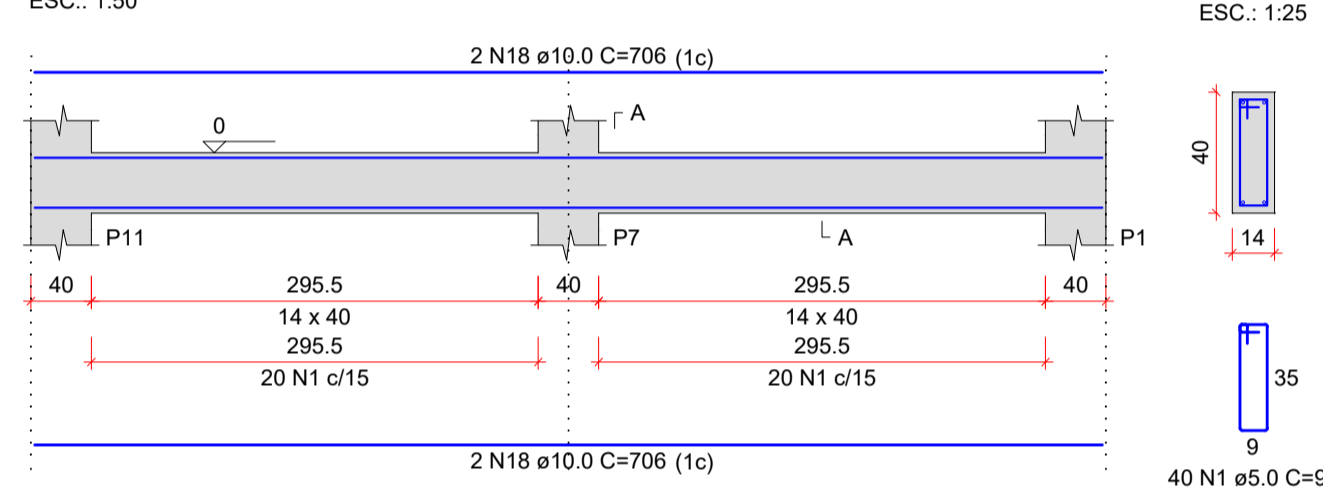


SEÇÃO A-A

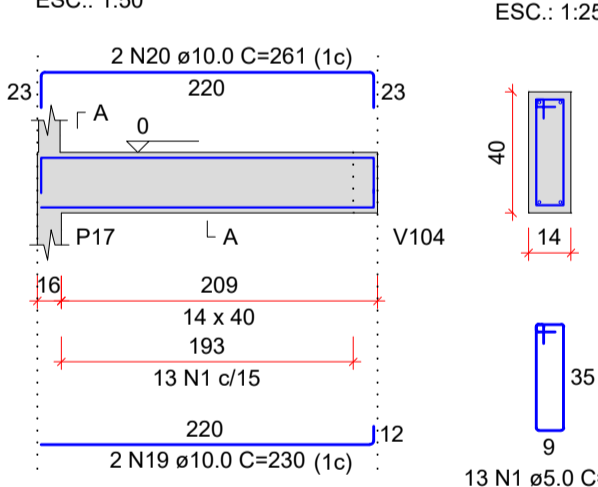
SEÇÃO B-B



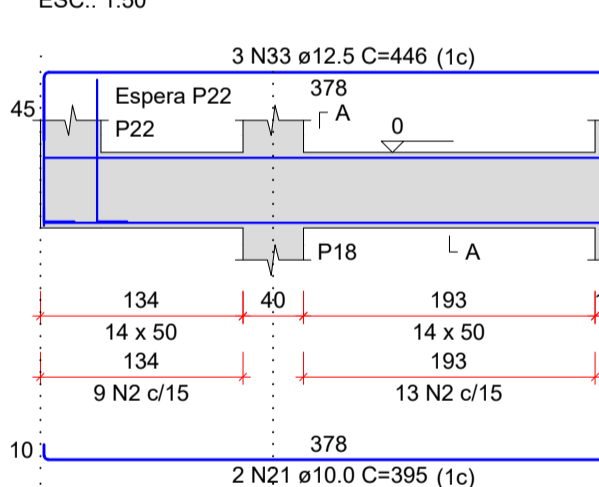
V106 (14 x 40)



V107 (14 x 40)

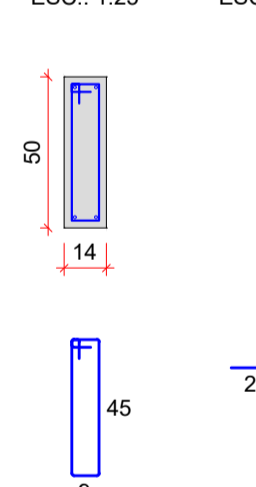


V108 (14 x 50)

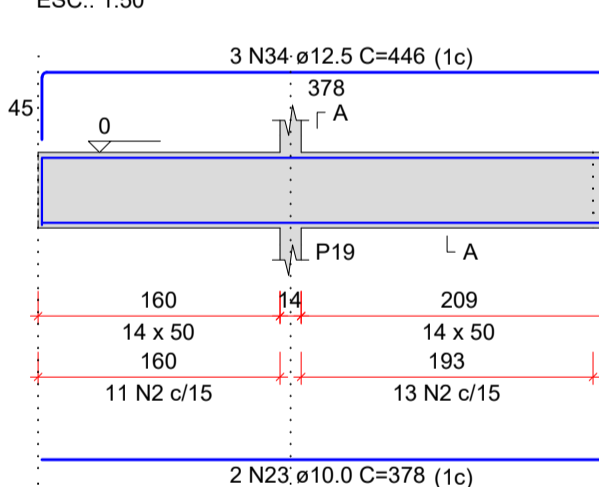


SEÇÃO A-A

ESPERA P22

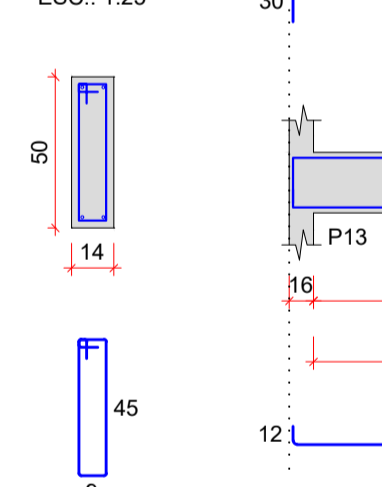


V109 (14 x 50)

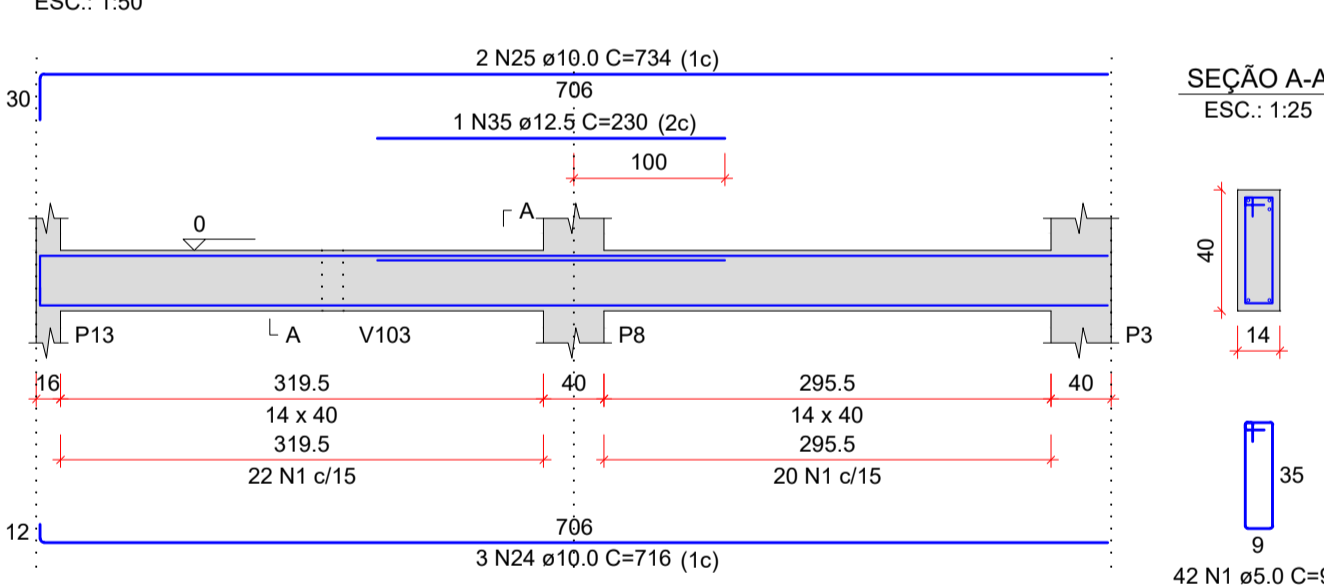


SEÇÃO A-A

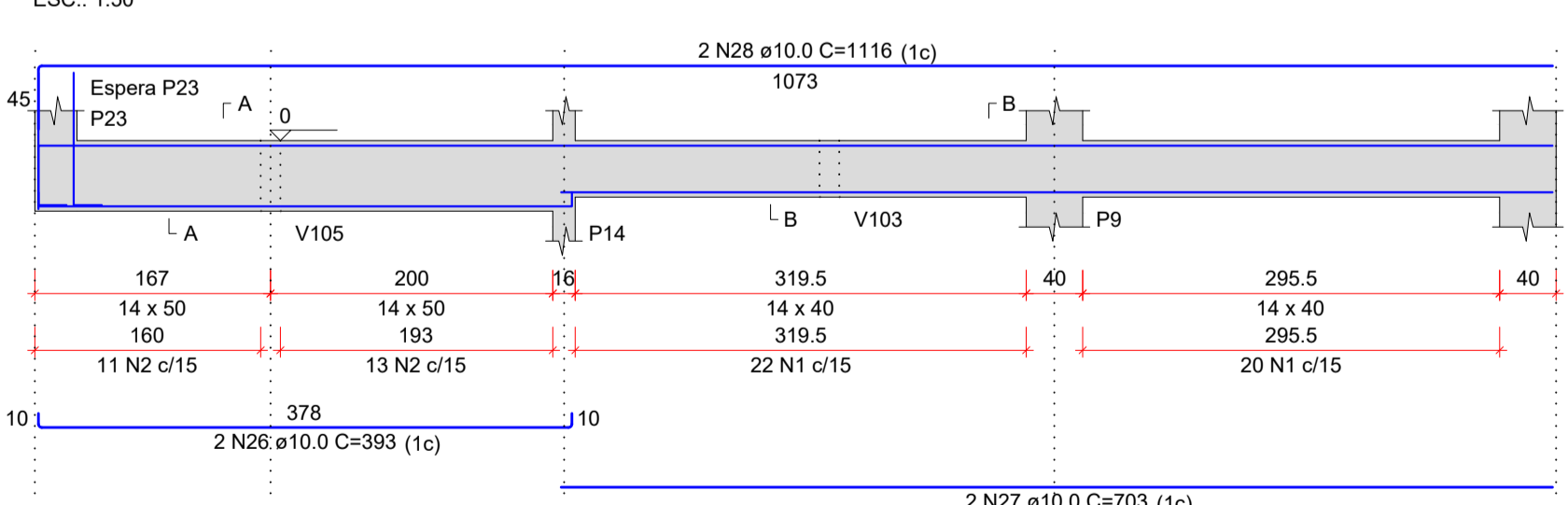
ESPERA P23



V110 (14 x 40)

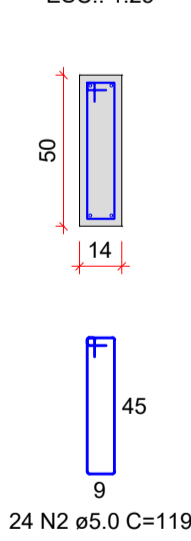


V111 (var)

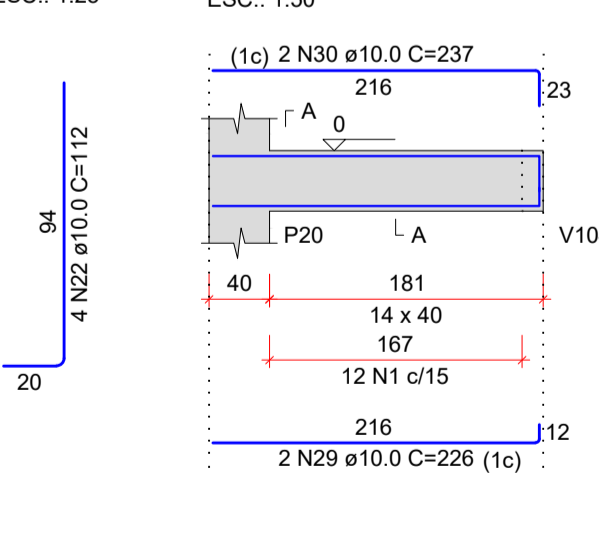


SEÇÃO A-A

SEÇÃO B-B

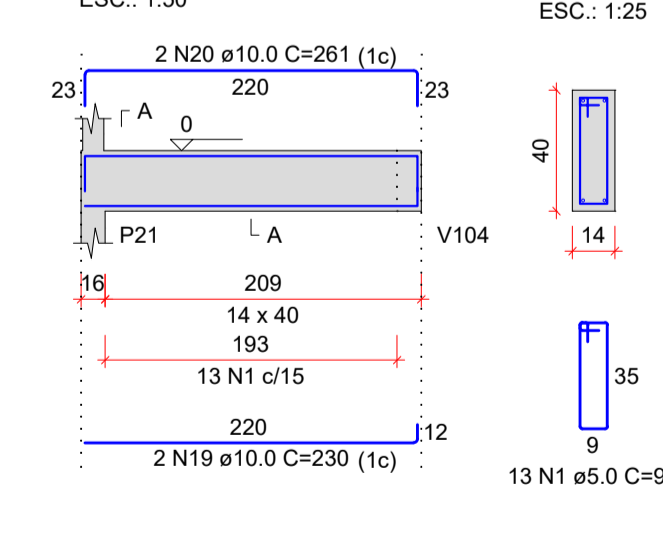


V112 (14 x 40)



SEÇÃO A-A

V113 (14 x 40)



VIGAS 100 (BALDRAME)

Escala Indicada

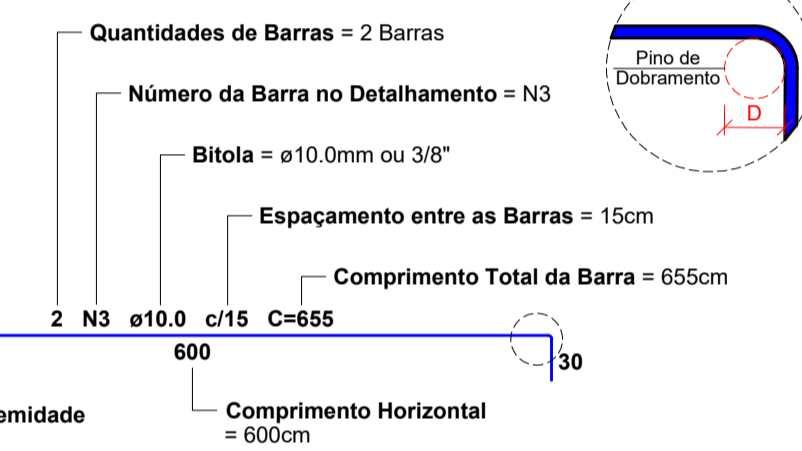
RELAÇÃO DO AÇO					RESUMO DO AÇO				
AÇO	N	DIAM (mm)	QUANT	C.UNIT (cm)	AÇO	DIAM (mm)	C.TOTAL (m)	QUANT (Barras)	PESO (kg)
V100	V101	V102			CA50	10.0	381.1	32	234.9
V103	V104	V105			CA60	12.5	52.6	5	50.7
V106	V107	V108							
V109	V110	V111							
V112	V113								
					PESO TOTAL (kg)				
					CA50 285.6				
					CA60 82.4				
					Volume de concreto (C-25) = 5.06 m³				
					Área de forma = 67.60 m²				

LEITURA DAS ARMADURAS

SEM ESCALA - COTAS EM CENTÍMETROS

Tabela de Conversões e Pinos de Dobramento

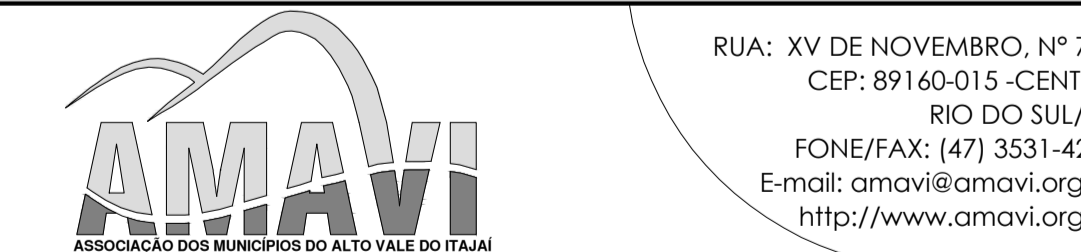
AÇO	DIAM (mm)	DIAM (pol)	PINO (D) (cm)
CA60	5.0	3/16	3"
CA50	6.3	1/4	3
CA50	8.0	5/16	4
CA50	10.0	3/8	5
CA50	12.5	1/2	6.5
CA50	16.0	5/8	8



CARIMBOS E APROVAÇÕES:

PROJETO - RESPONSÁVEL TÉCNICO:	EXECUÇÃO - RESPONSÁVEL TÉCNICO:	ASSINATURA - PROPRIETÁRIO: [REPRESENTANTE]
WALTER DALPIAZ JUNIOR ENGENHEIRO CIVIL - CREA 075658-9		
REVISÃO	DATA	ALTERAÇÕES

PROJETO ESTRUTURAL



RUA: XV DE NOVEMBRO, Nº 737
CEP: 89160-015 -CENTRO
RIO DO SUL/SC
FONE/FAX: (47) 3531-4242
E-mail: amavi@amavi.org.br
http://www.amavi.org.br

OBRA:	CEI Hanna Misfeld		
PROPRIETÁRIO:	PREFEITURA MUNICIPAL DE AGROLÂNDIA		
ENDEREÇO:	ALAMEDA TROMBUDO ALTO - BAIRRO TRÊS BARRAS -AGROLÂNDIA/SC		
CONTEÚDO:	DESENHO:	EDUARDO FIGUEIREDO	FOLHA:
- DETALHAMENTO VIGAS 100	ÁREA:	146.49m²	EST
	ESCALA:	INDICADA	06/07
	DATA:	14/08/2020	
TODOS OS DIREITOS RESERVADOS. PROIBIDA A REPRODUÇÃO PARCIAL OU TOTAL. DESENHO VÁLIDO SOMENTE ASSINADO PELO RESPONSÁVEL DO PROJETO.			