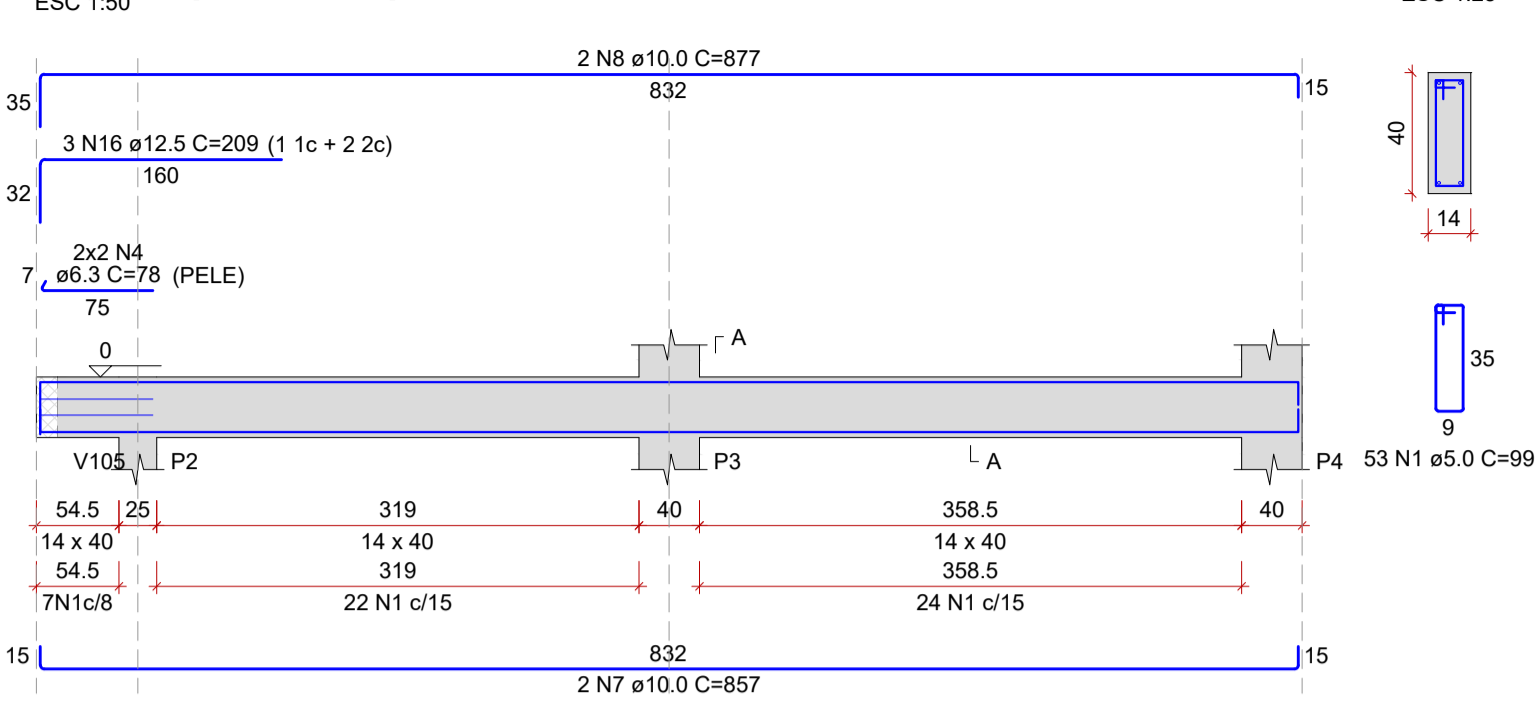
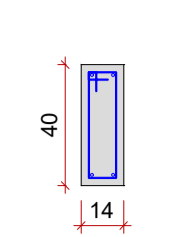


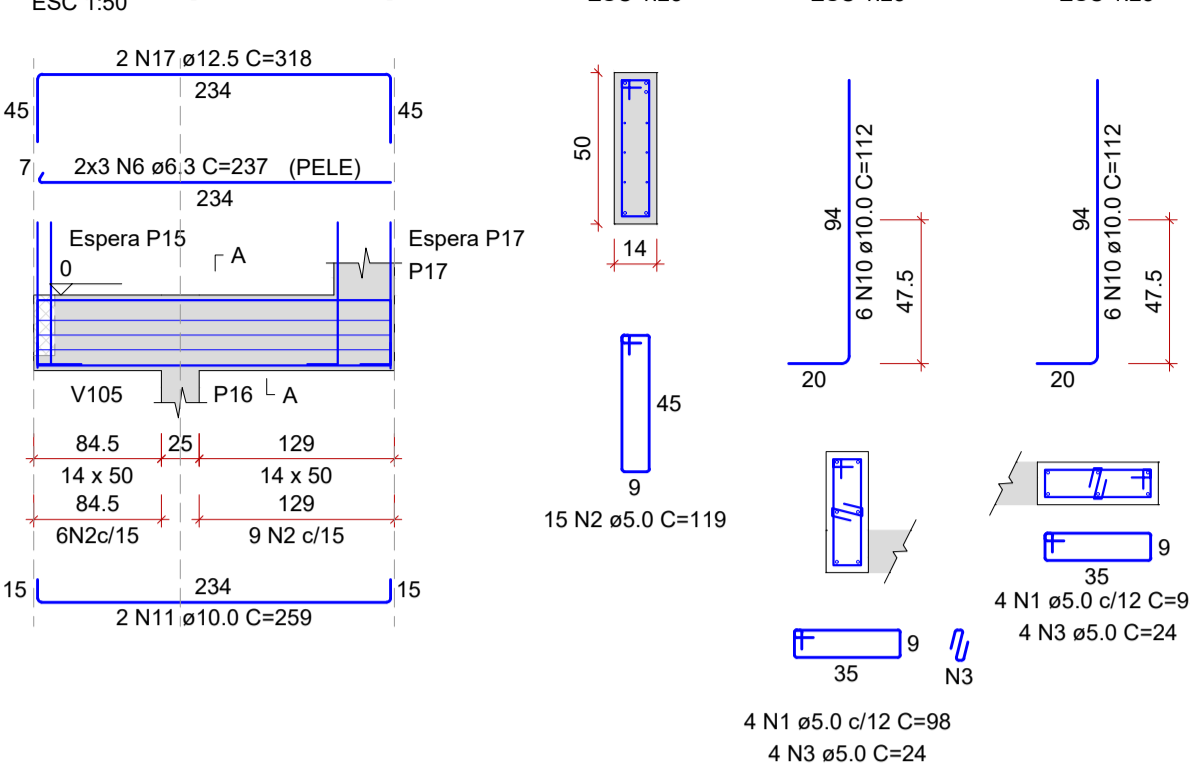
### V100 (14 x 40)



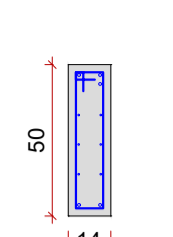
### SEÇÃO A-A



### V104 (14 x 50)



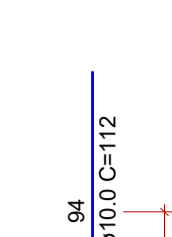
### SEÇÃO A-A



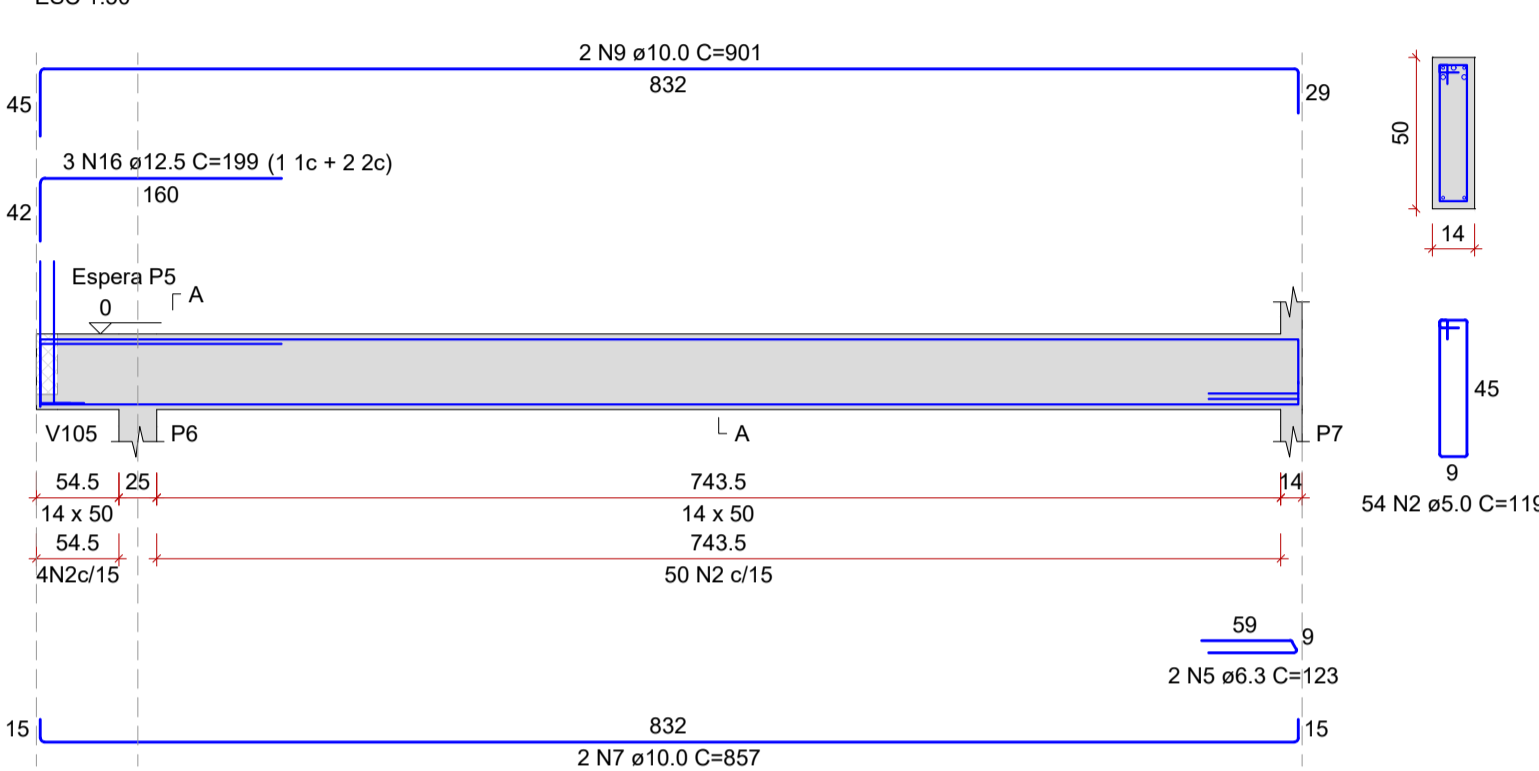
### ESPERA P15



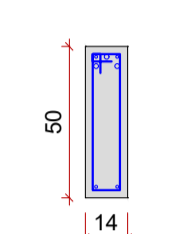
### ESPERA P17



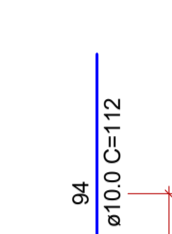
### V101 (14 x 50)



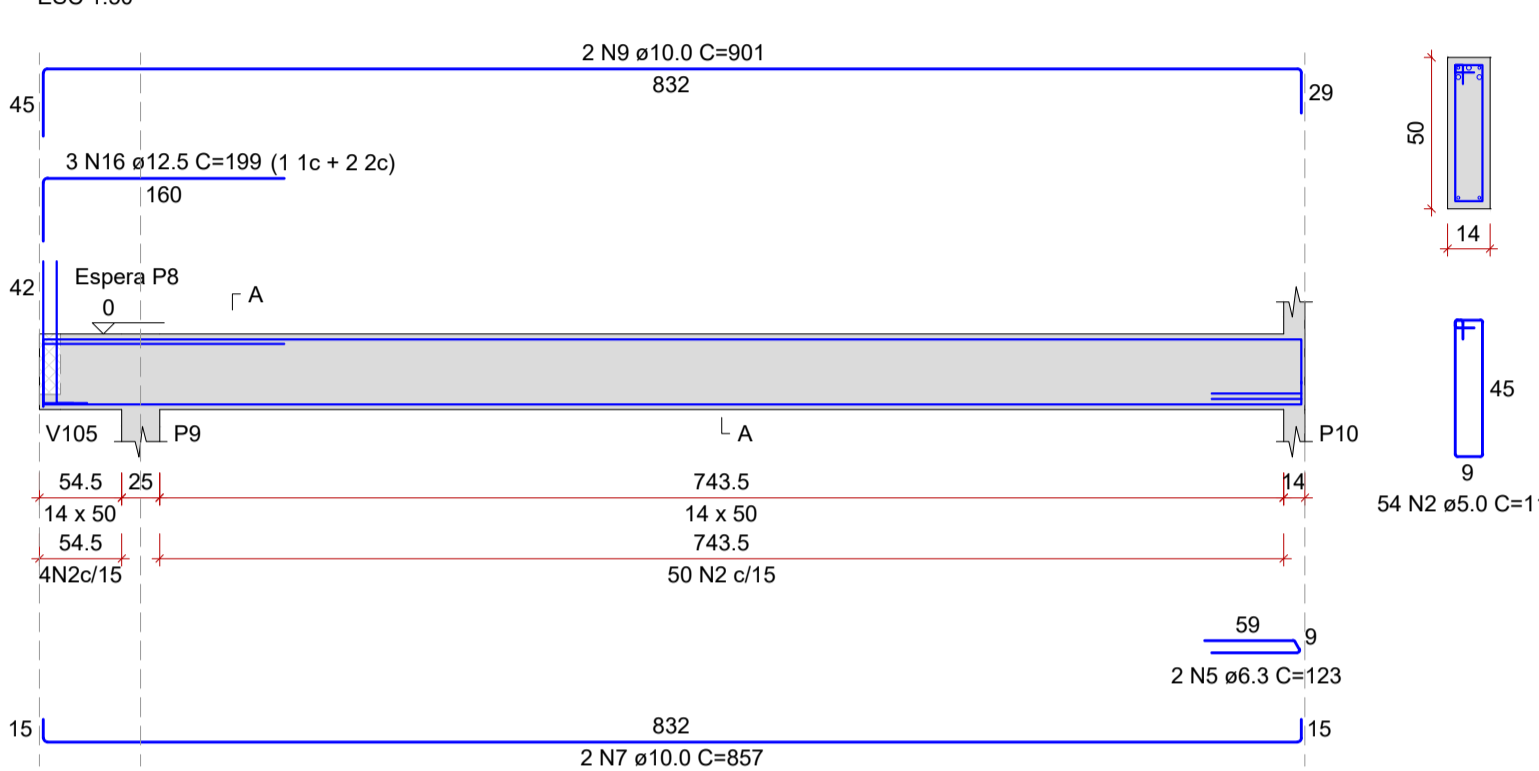
### SEÇÃO A-A



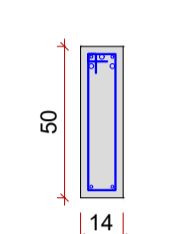
### ESPERA P5



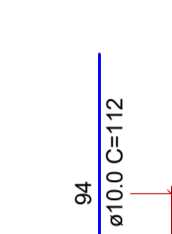
### V102 (14 x 50)



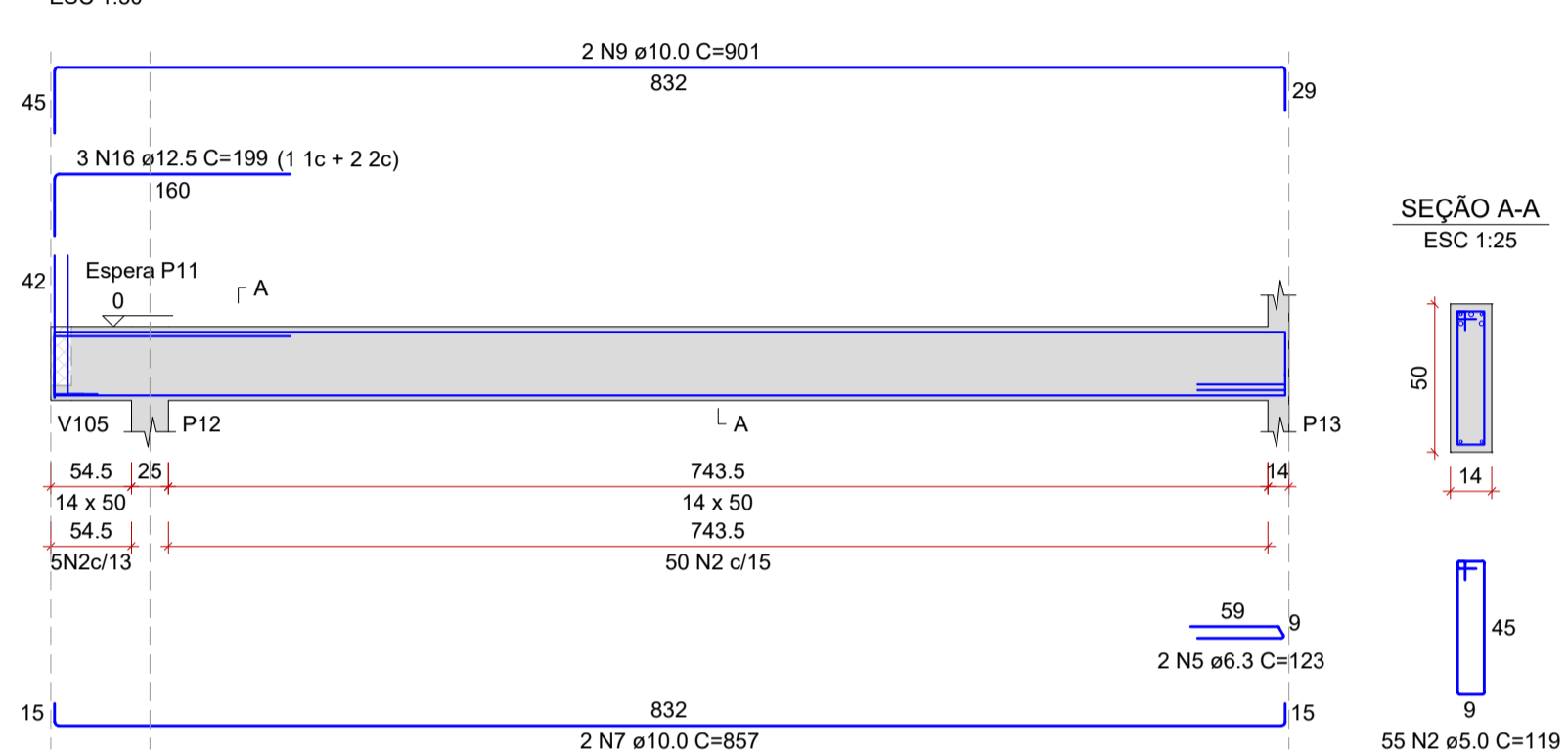
### SEÇÃO A-A



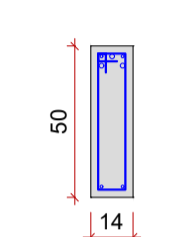
### ESPERA P8



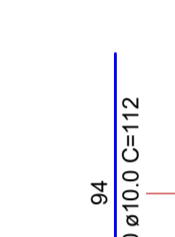
### V103 (14 x 50)



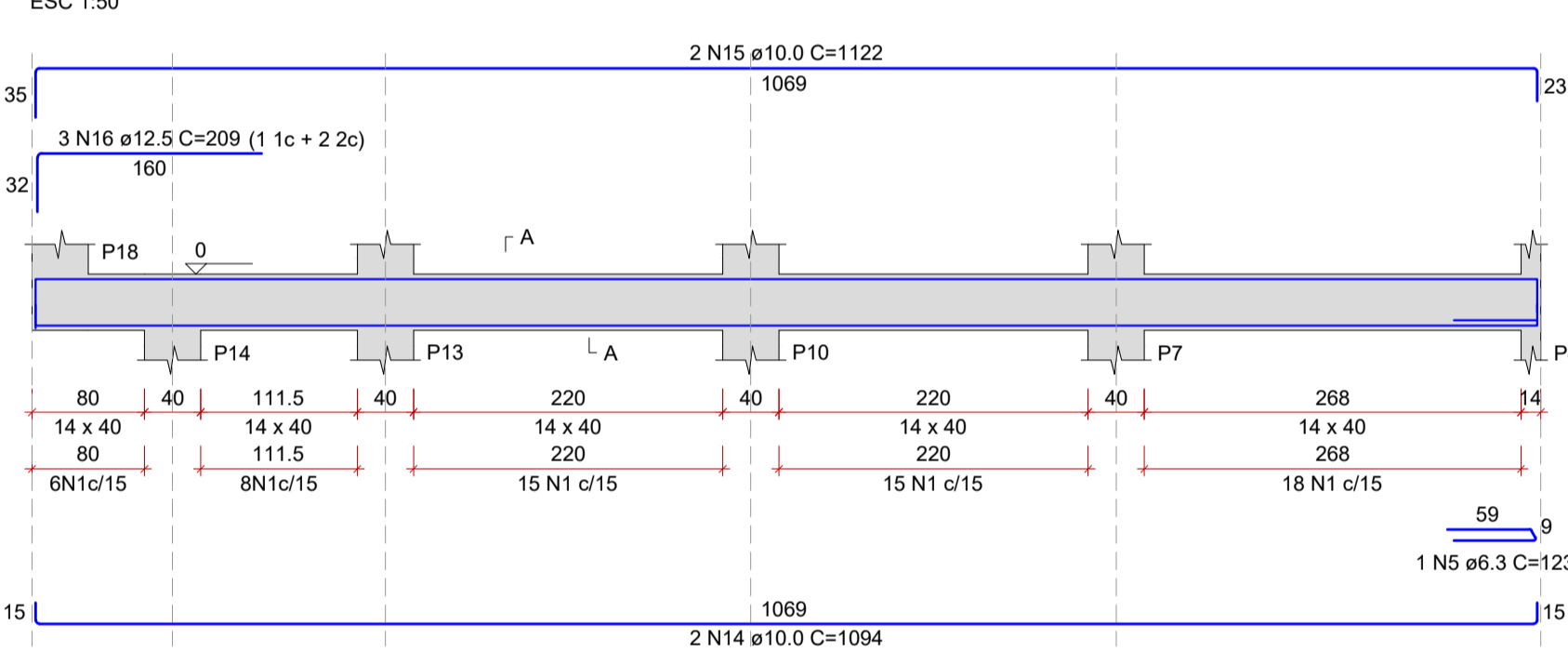
### SEÇÃO A-A



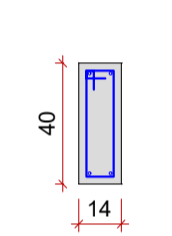
### ESPERA P11



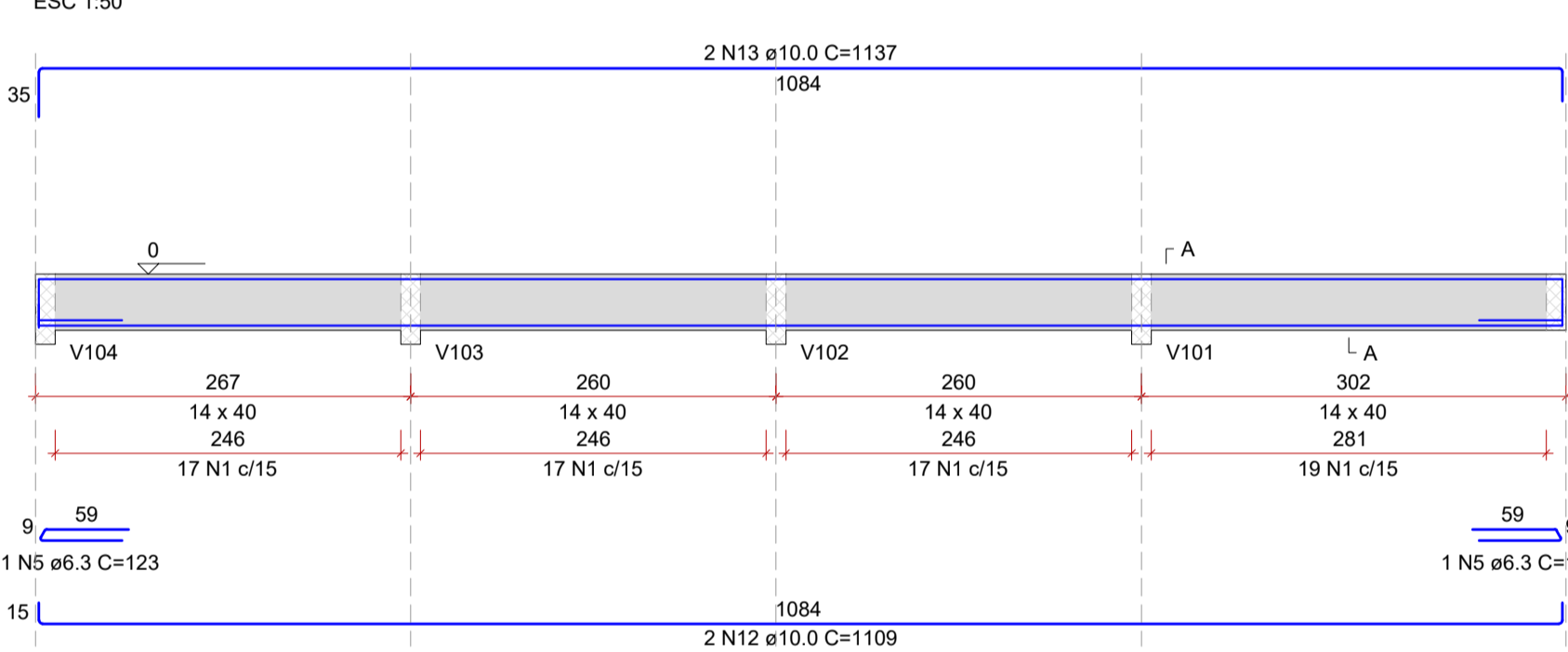
### V106 (14 x 40)



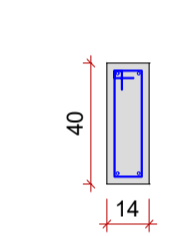
### SEÇÃO A-A



### V105 (14 x 40)



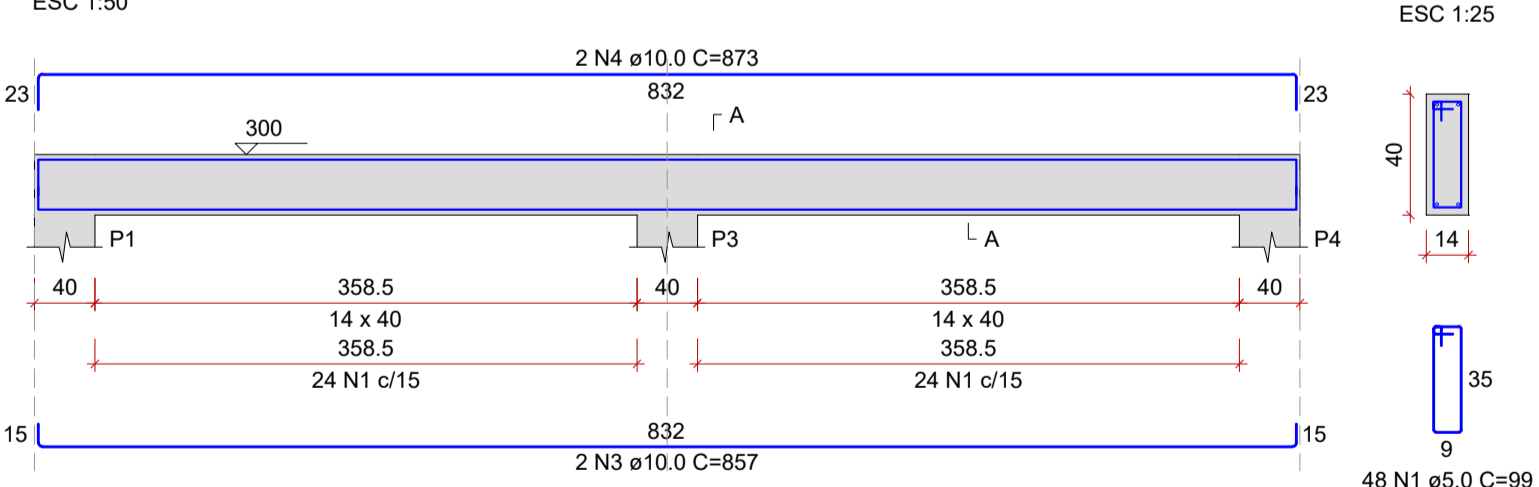
### SEÇÃO A-A



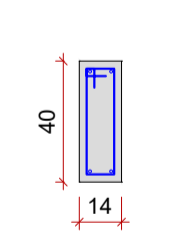
## VIGAS 100

Escala Indicada

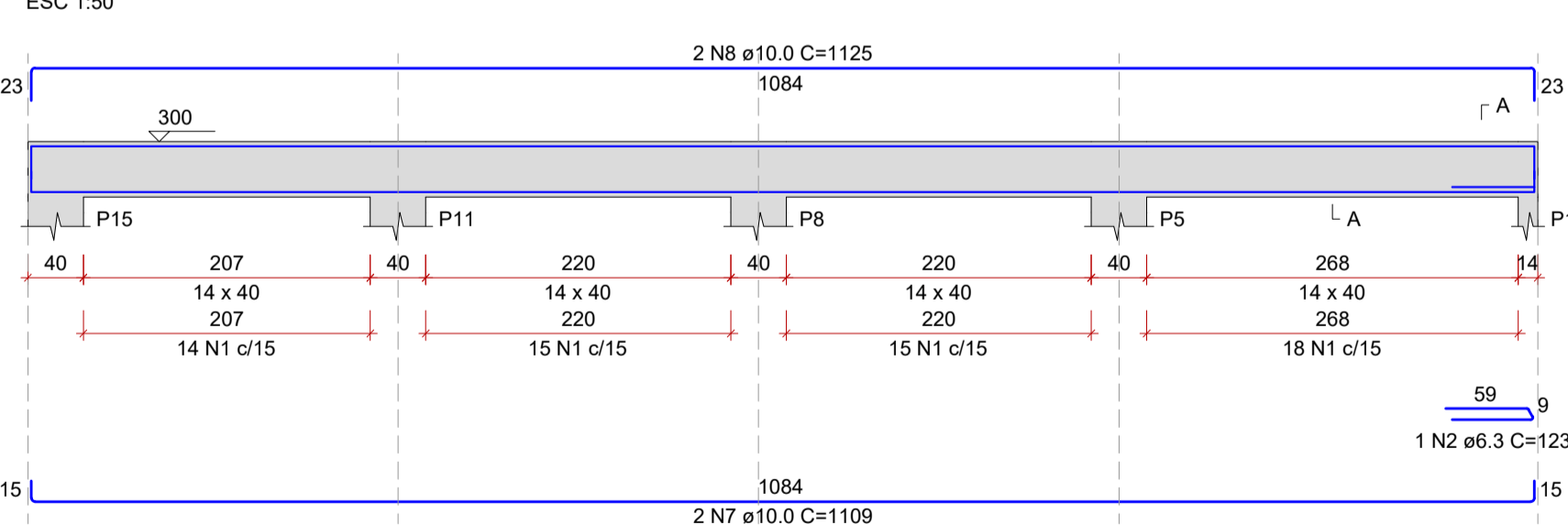
### V200 (14 x 40)



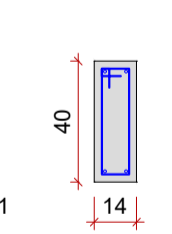
### SEÇÃO A-A



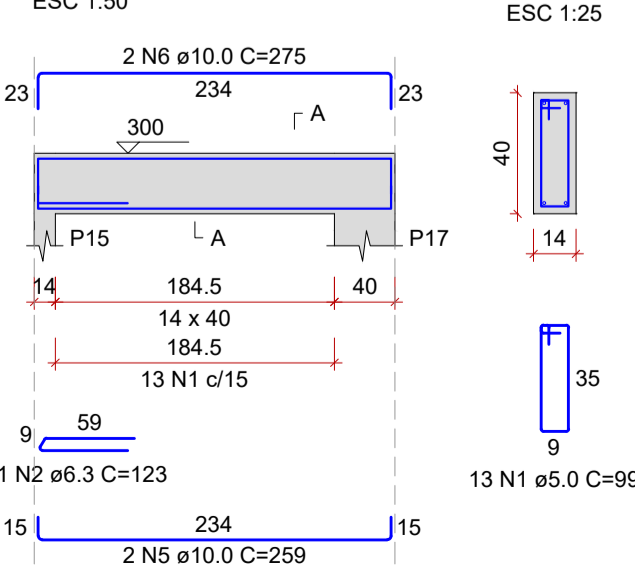
### V202 (14 x 40)



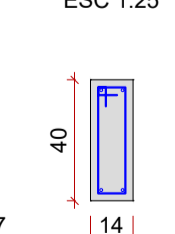
### SEÇÃO A-A



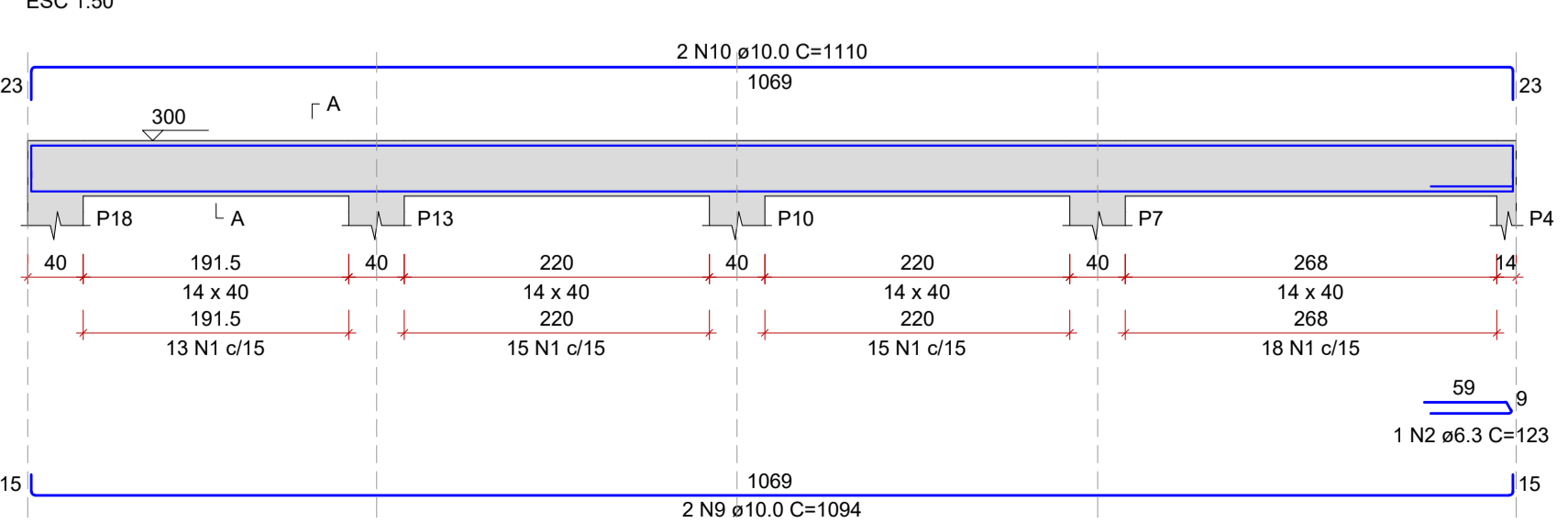
### V201 (14 x 40)



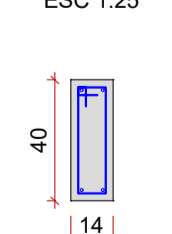
### SEÇÃO A-A



### V203 (14 x 40)



### SEÇÃO A-A



## VIGAS 200

Escala Indicada

AÇO	N	DIAM (mm)	QUANT	C.UNIT (cm)	C.TOTAL (cm)
V100	1	5.0	205	99	20295
V103	2	5.0	178	119	21182
V106	3	5.0	20	24	480
	4	6.3	4	78	312
	5	6.3	9	123	1107
	6	6.3	6	237	1422
	7	10.0	8	857	6856
	8	10.0	2	877	1754
	9	10.0	6	901	5406
	10	10.0	30	112	3360
	11	10.0	2	259	518
	12	10.0	2	1109	2218
	13	10.0	2	1137	2274
	14	10.0	2	1094	2188
	15	10.0	2	1122	2244
	16	12.5	15	199	2985
	17	12.5	2	318	636

AÇO	DIAM (mm)	C.TOTAL (m)	PESO + 0% (kg)
CA50	6.3	28.4	7
CA50	10.0	268.2	165.3
CA60	5.0	36.2	34.9
CA60	5.0	419.4	64.7
<b>PESO TOTAL (kg)</b>			<b>207.2</b>
CA50			207.2
CA60			64.7

Volume de concreto (C-25) = 3.60 m³  
Área de forma = 59.54 m²

## NOTAS IMPORTANTES

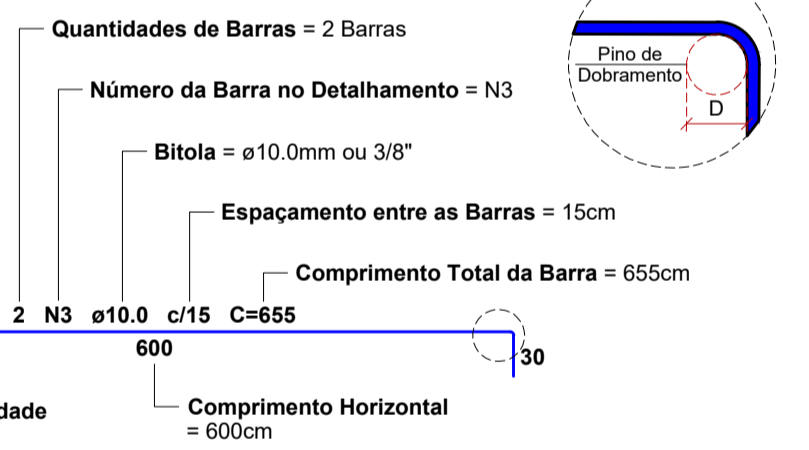
- CONCRETO:**  
- f<sub>ck</sub> = 25 MPa (CLASSE II)  
- Fator AC = 0,60  
- Consumo mínimo de cimento = 350Kg/m³
- COBRIMENTO DA ARMADURA:**  
- VIGAS E PILARES = 2,5cm  
- FUNDAÇÕES = 5,0cm  
\* GARANTIR O COBRIMENTO MÍNIMO COM O USO DE ESPACADORES OU PASTILHAS.
- AÇO:**  
- AÇO: CA-60 - Ø5.0mm  
- AÇO: CA-50 - DEMAIS BITOLAS

## LEITURA DAS ARMADURAS

SEM ESCALA - COTAS EM CENTÍMETROS

### Tabela de Conversões e Pinos de Dobramento

AÇO	DIAM (mm)	DIAM (pol)	PINO (D)
CA60	5.0	3/16	3"
CA50	6.3	1/4	3
CA50	8.0	5/16	4
CA50	10.0	3/8	5
CA50	12.5	1/2	6.5
CA50	16.0	5/8	8



PROJETO - RESPONSÁVEL TÉCNICO:	EXECUÇÃO - RESPONSÁVEL TÉCNICO:	ASSINATURA - PROPRIETÁRIO: (REPRESENTANTE)
ALTERAÇÕES		
REVISÃO	DATA	

AÇO	N	DIAM (mm)	QUANT	C.UNIT (cm)	C.TOTAL (cm)
V200	1	5.0	184	99	18216
V203	2	6.3	3	123	369
CA60	3	10.0	2	857	1714
CA50	4	10.0	2	873	1746
	5	10.0	2	259	518
	6	10.0	2	275	550
	7	10.0	2	1109	2218
	8	10.0	2	1125	2250
	9	10.0	2	1094	2188
	10	10.0	2	1110	2220

AÇO	DIAM (mm)	C.TOTAL (m)	PESO + 0% (kg)
CA50	6.3	3.7	0.9
CA60	10.0	134	82.6
CA60	5.0	182.2	28.1
<b>PESO TOTAL (kg)</b>			<b>83.5</b>
CA50			83.5
CA60			28.1

Volume de concreto (C-25) = 1.81 m³  
Área de forma = 30.44 m²

## PROJETO ESTRUTURAL

RUA: XV DE NOVEMBRO, Nº 737  
CEP: 89160-015 - CENTRO  
RIO DO SUL/SC  
FONE/FAX: (47) 3531-4242  
E-mail: amavi@amavi.org.br  
http://www.amavi.org.br

**OBRA:**  
**CONSTRUÇÃO DE REFEITÓRIO - CEI RUDOLFO THEILACKER**

**PROPRIETÁRIO:** PREFEITURA MUNICIPAL DE AGROLÂNDIA

**ENDEREÇO:** RUA RUDOLFO THEILACKER, Nº 159- BAIRRO IPIRANGA - AGROLÂNDIA/SC

**CONTEÚDO:** - VIGAS

**DESENHO:** EDUARDO FIGUEIREDO

**ÁREA:** 90,71 m²

**ESCALA:** INDICADA

**DATA:** NOVEMBRO/2021

**FOLHA:** EST 05/05

TODOS OS DIREITOS RESERVADOS. PROIBIDA A REPRODUÇÃO PARCIAL OU TOTAL. DESENHO VÁLIDO SOMENTE ASSINADO PELO RESPONSÁVEL DO PROJETO.