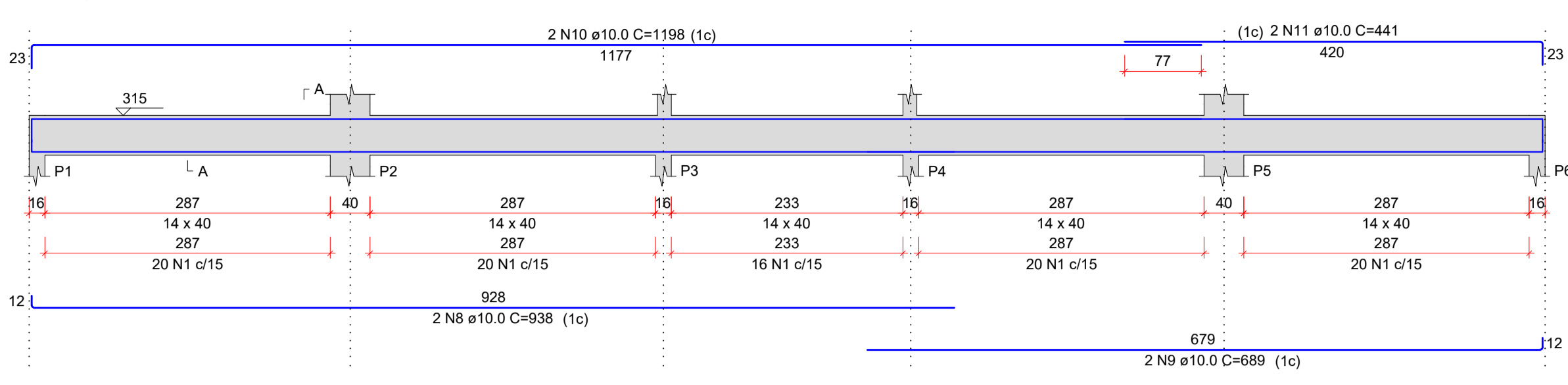
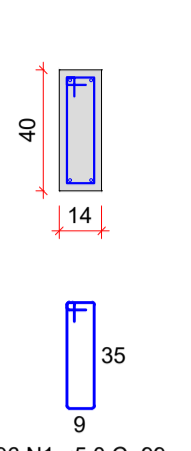


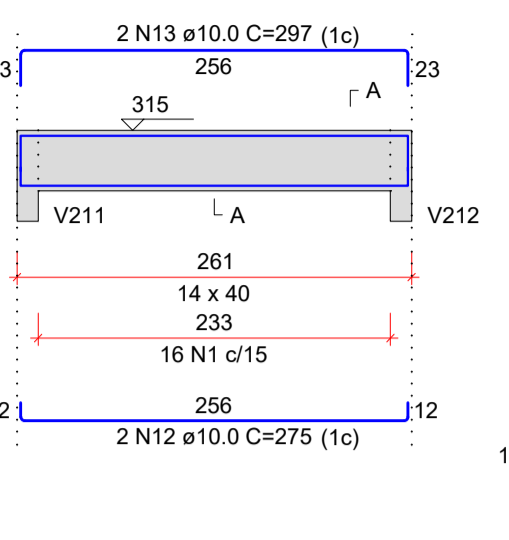
V200 (14 x 40)
ESC.: 1:50



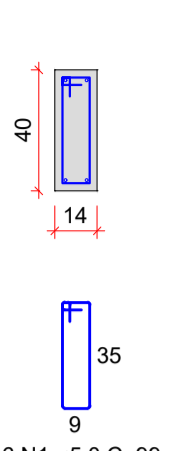
SEÇÃO A-A
ESC.: 1:25



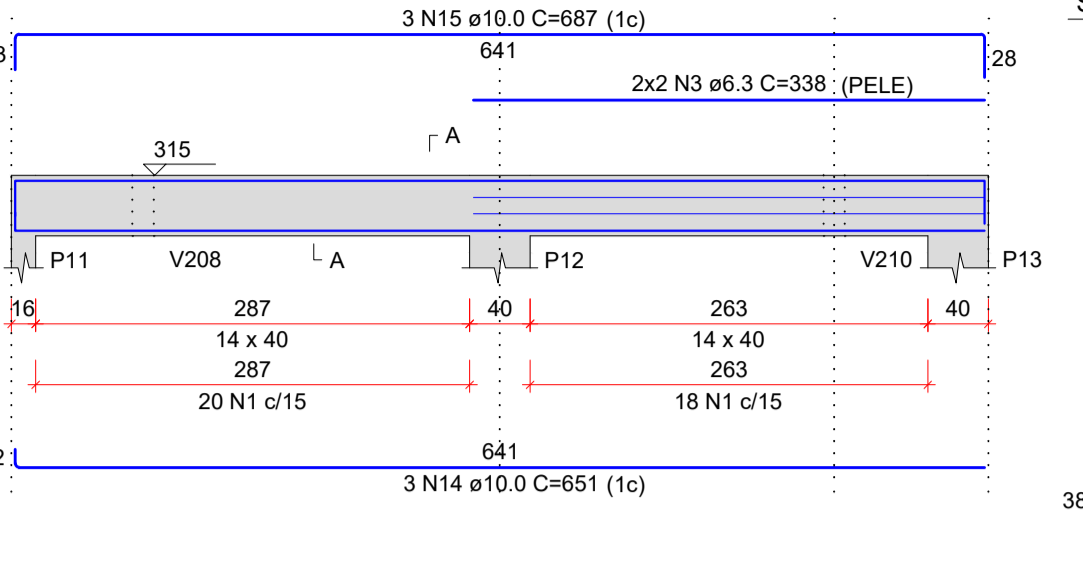
V201 (14 x 40)
ESC.: 1:50



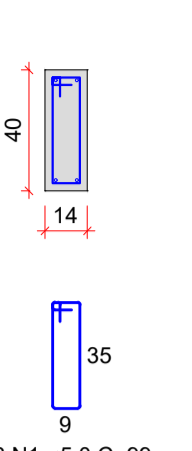
SEÇÃO A-A
ESC.: 1:25



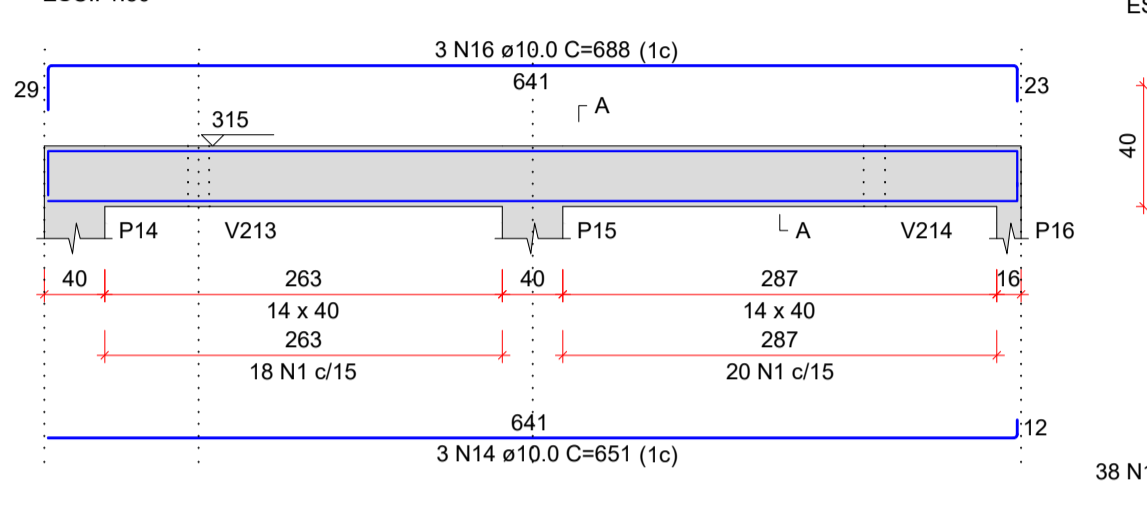
V202 (14 x 40)
ESC.: 1:50



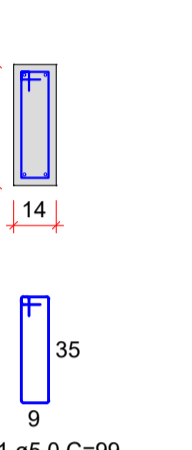
SEÇÃO A-A
ESC.: 1:25



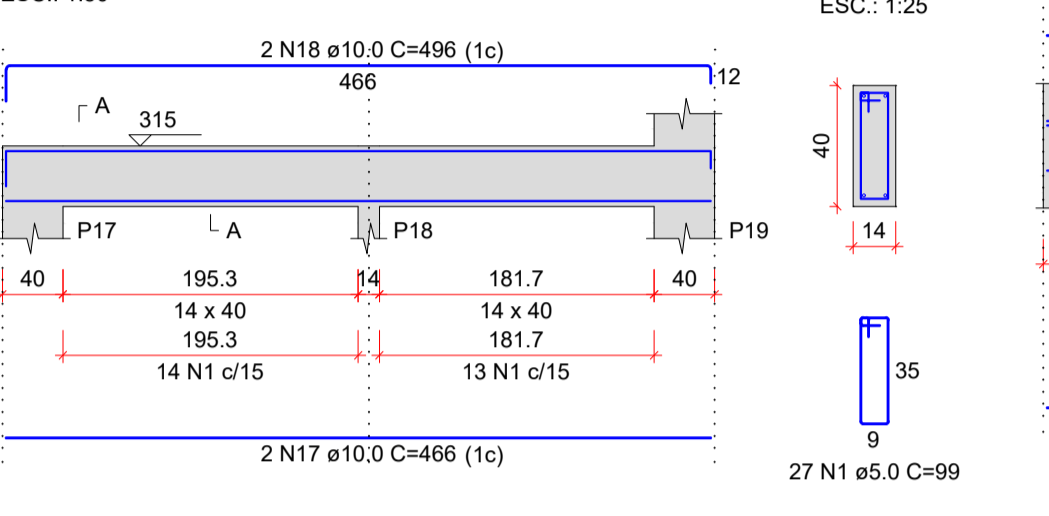
V203 (14 x 40)
ESC.: 1:50



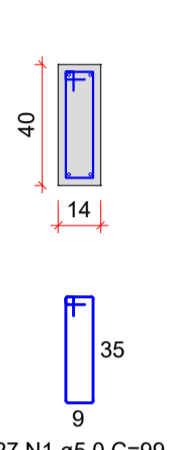
SEÇÃO A-A
ESC.: 1:25



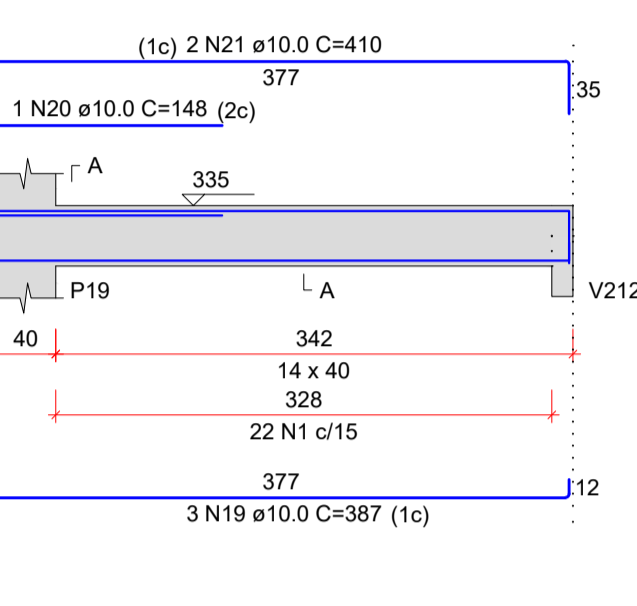
V204 (14 x 40)
ESC.: 1:50



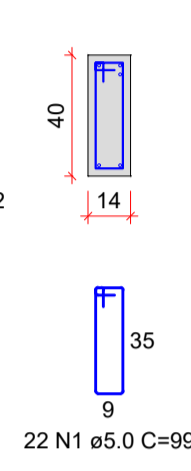
SEÇÃO A-A
ESC.: 1:25



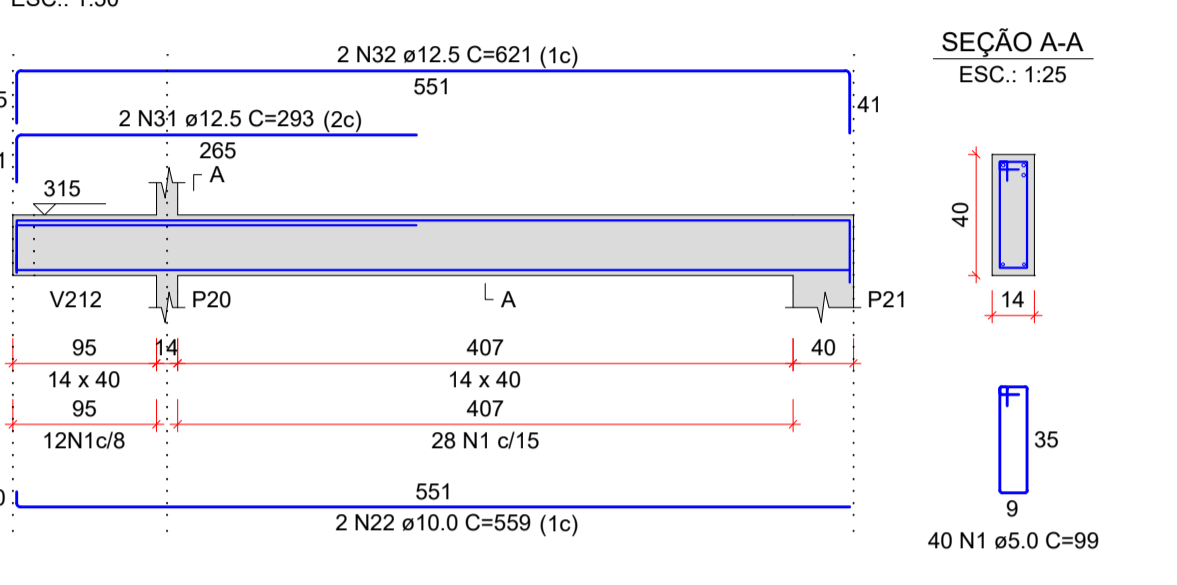
V205 (14 x 40)
ESC.: 1:50



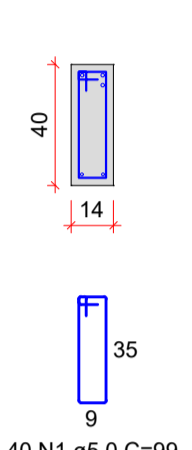
SEÇÃO A-A
ESC.: 1:25



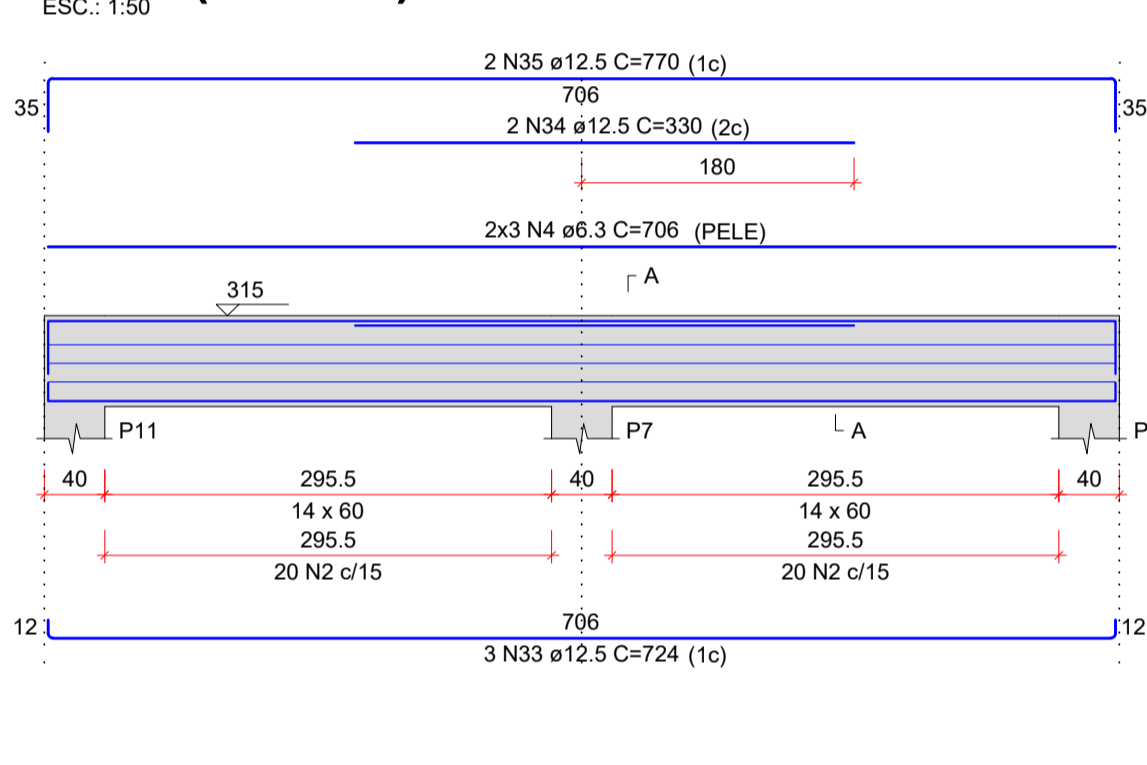
V206 (14 x 40)
ESC.: 1:50



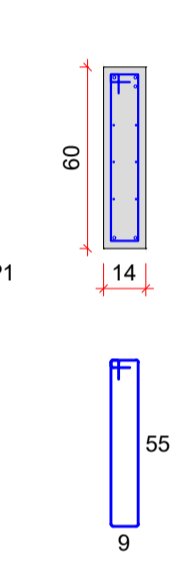
SEÇÃO A-A
ESC.: 1:25



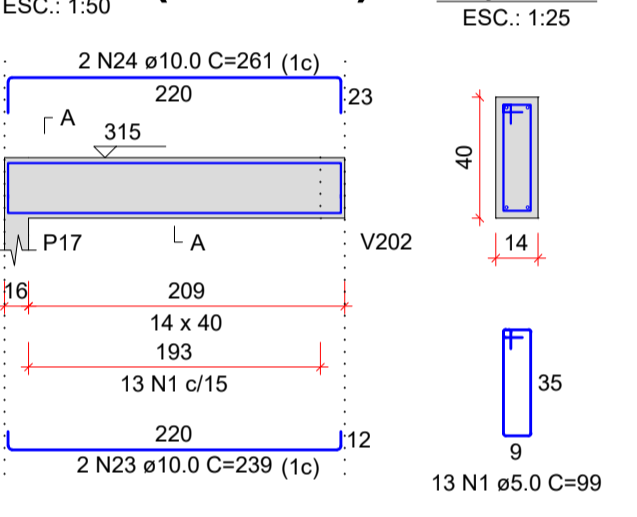
V207 (14 x 60)
ESC.: 1:50



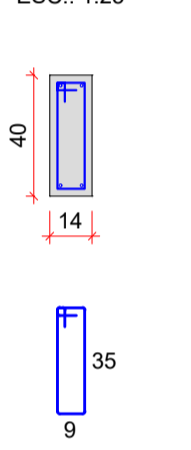
SEÇÃO A-A
ESC.: 1:25



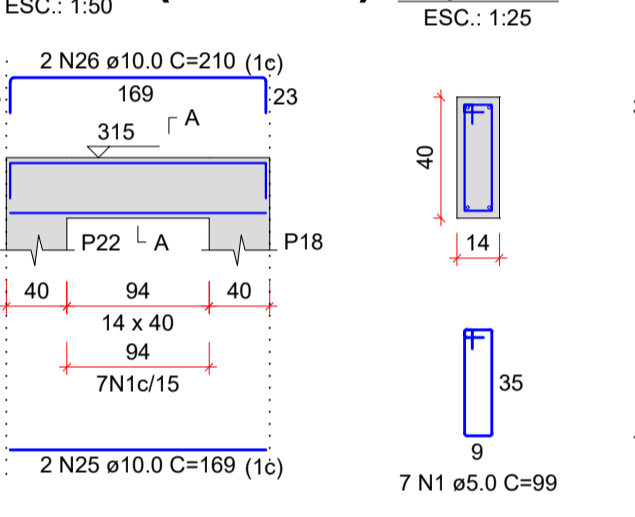
V208 (14 x 40)
ESC.: 1:50



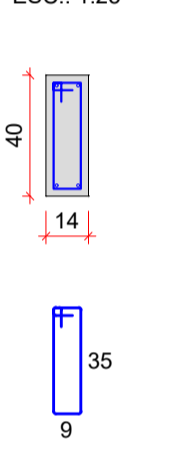
SEÇÃO A-A
ESC.: 1:25



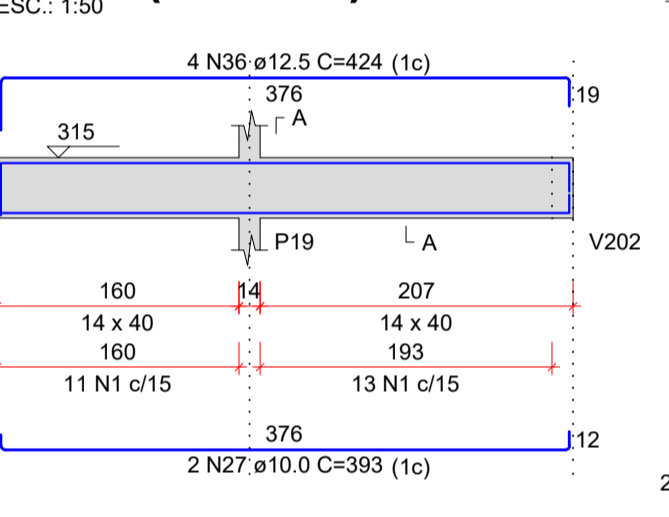
V209 (14 x 40)
ESC.: 1:50



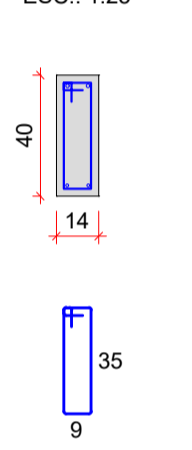
SEÇÃO A-A
ESC.: 1:25



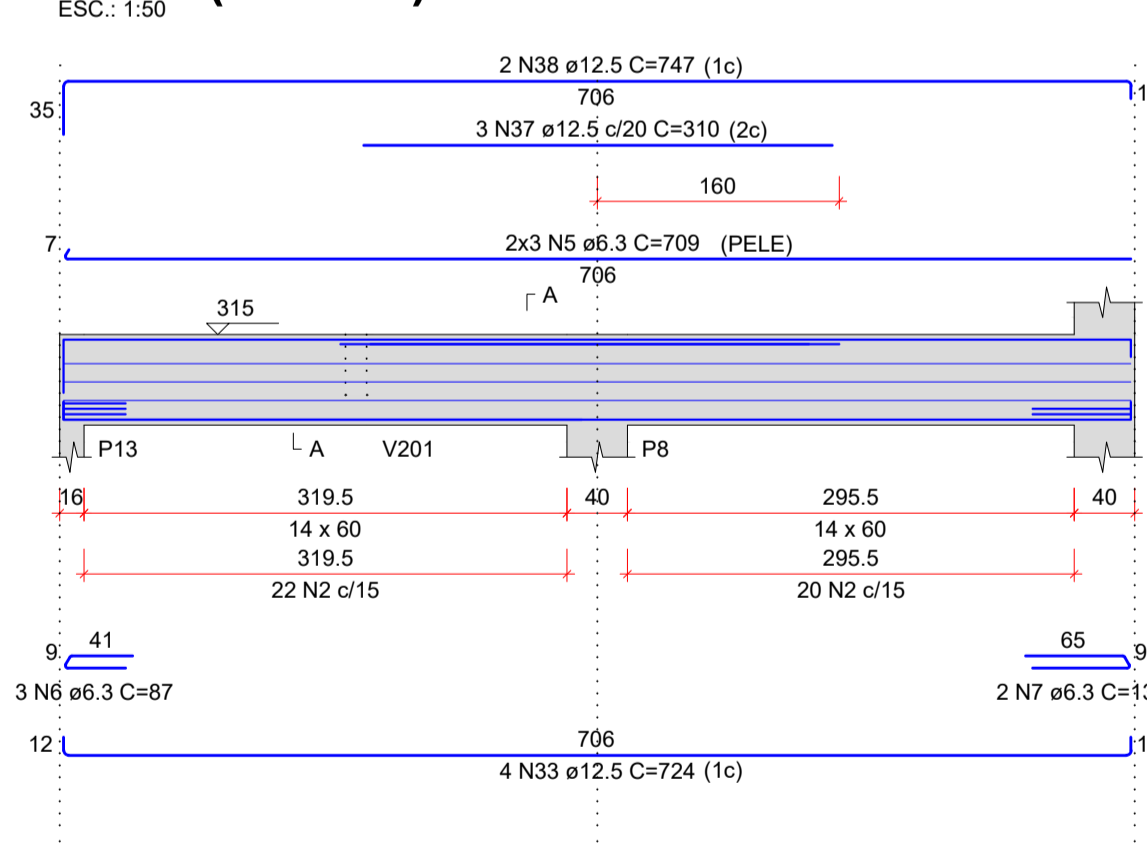
V210 (14 x 40)
ESC.: 1:50



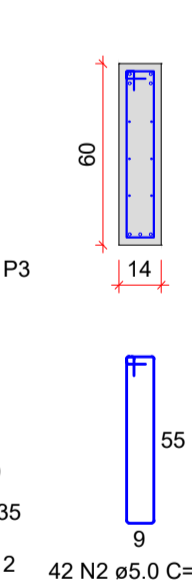
SEÇÃO A-A
ESC.: 1:25



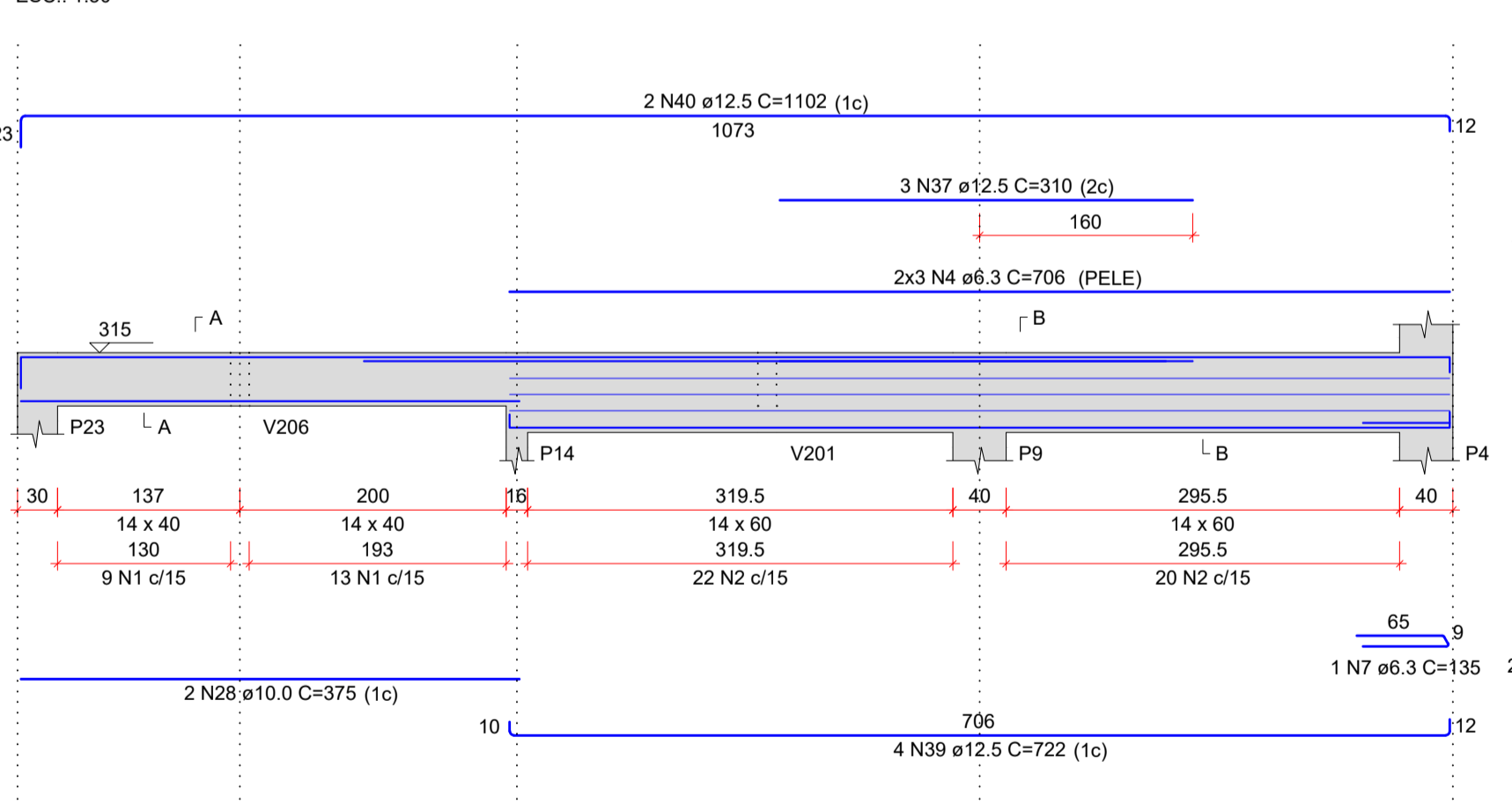
V211 (14 x 60)
ESC.: 1:50



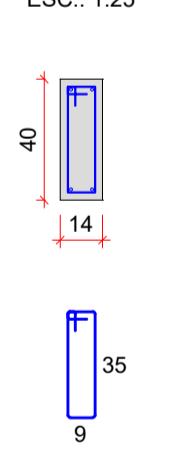
SEÇÃO A-A
ESC.: 1:25



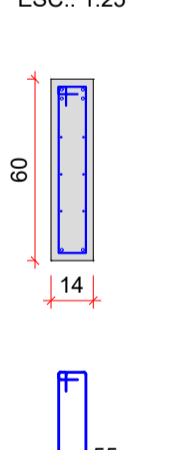
V212 (var)
ESC.: 1:50



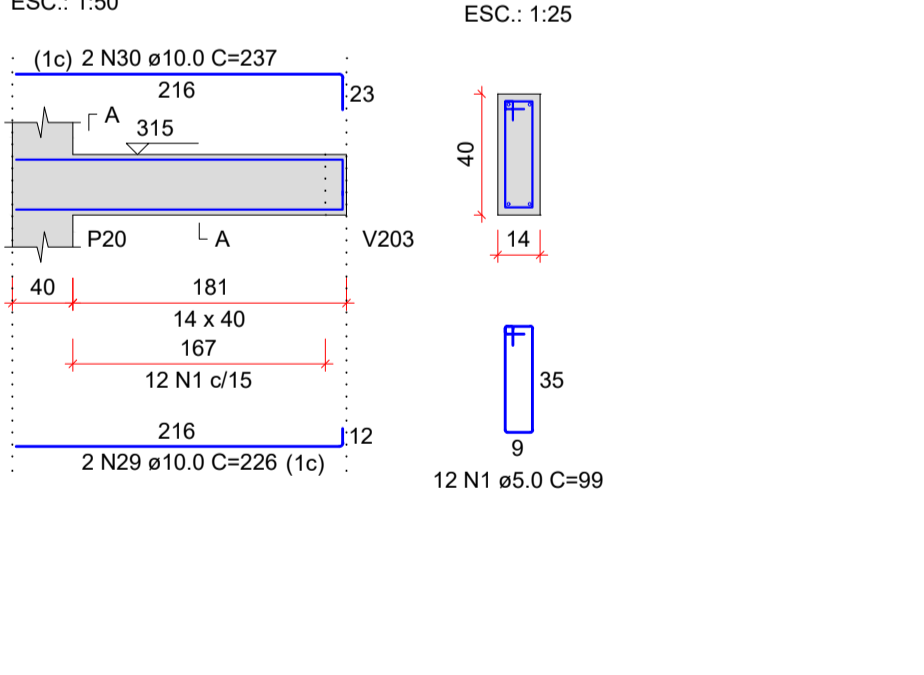
SEÇÃO A-A
ESC.: 1:25



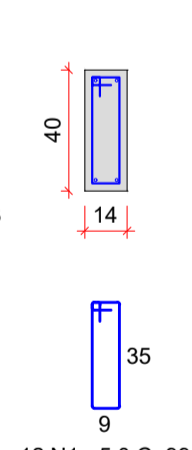
SEÇÃO B-B
ESC.: 1:25



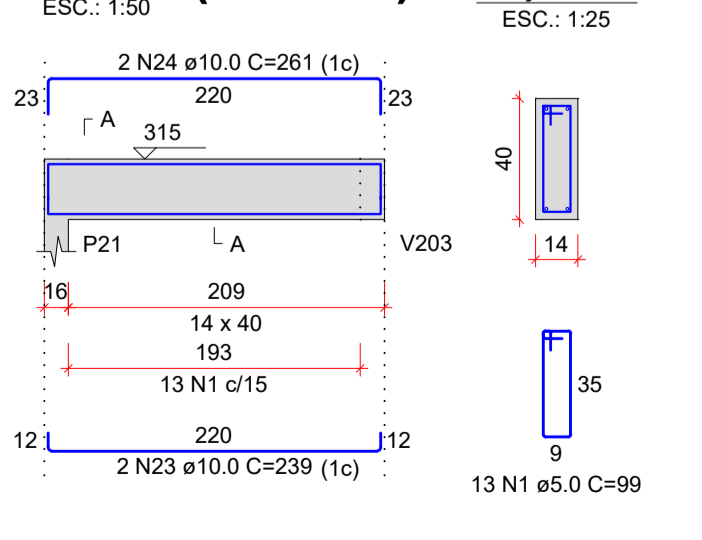
V213 (14 x 40)
ESC.: 1:50



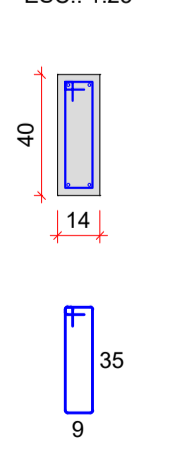
SEÇÃO A-A
ESC.: 1:25



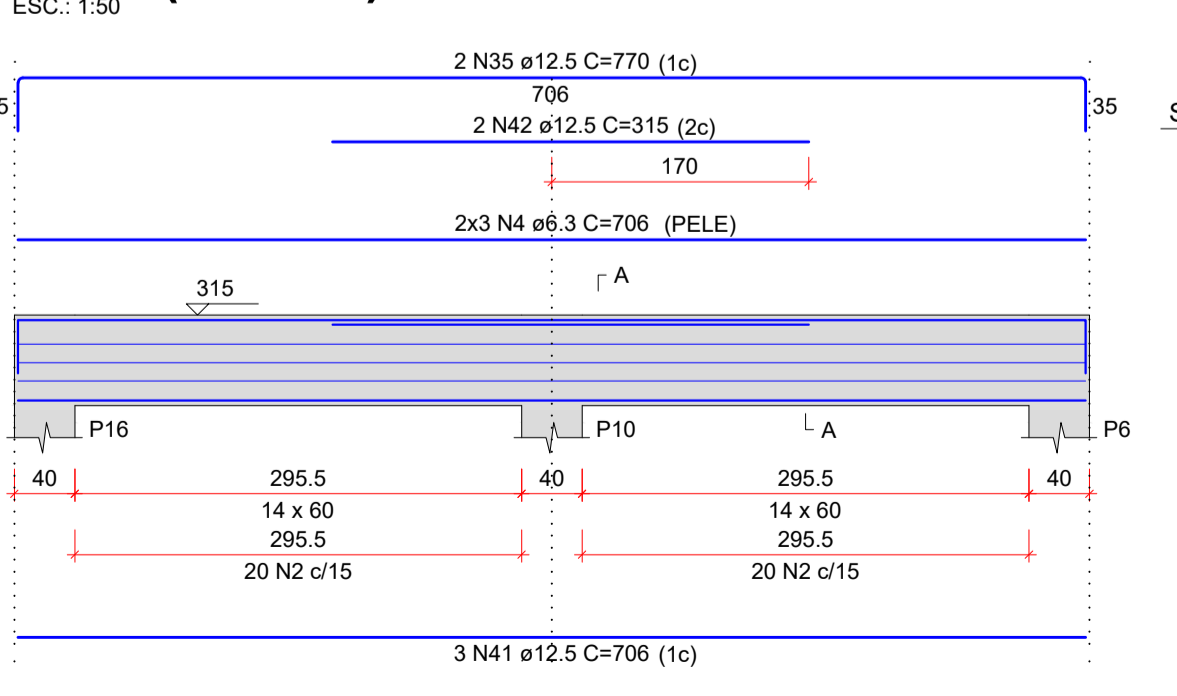
V214 (14 x 40)
ESC.: 1:50



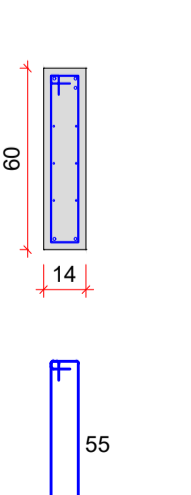
SEÇÃO A-A
ESC.: 1:25



V215 (14 x 60)
ESC.: 1:50



SEÇÃO A-A
ESC.: 1:25



VIGAS 200 (COBERTURA)
Escala Indicada

RELAÇÃO DO AÇO

AÇO	N	DIAM (mm)	QUANT	C.UNIT (cm)	C.TOTAL (cm)
V200	1	5.0	368	99	36432
V200	2	5.0	164	139	22796
V200	3	6.3	4	338	1352
V200	4	6.3	18	706	12708
V200	5	6.3	6	709	4254
V200	6	6.3	3	87	261
V200	7	6.3	3	135	405
V200	8	6.3	2	1876	3752
V200	9	10.0	2	689	1378
V200	10	10.0	2	1198	2396
V200	11	10.0	2	441	882
V200	12	10.0	2	275	550
V200	13	10.0	2	297	594
V200	14	10.0	6	651	3906
V200	15	10.0	3	687	2061
V200	16	10.0	3	688	2064
V200	17	10.0	2	496	992
V200	18	10.0	2	496	992
V200	19	10.0	3	387	1161
V200	20	10.0	1	148	148
V200	21	10.0	2	410	820
V200	22	10.0	2	559	1118
V200	23	10.0	4	239	956
V200	24	10.0	4	261	1044
V200	25	10.0	2	169	338
V200	26	10.0	2	210	420
V200	27	10.0	2	393	786
V200	28	10.0	2	375	750
V200	29	10.0	2	226	452
V200	30	10.0	2	237	474
V200	31	12.5	2	293	586
V200	32	12.5	6	621	3726
V200	33	12.5	7	724	5068
V200	34	12.5	2	330	660
V200	35	12.5	4	770	3080
V200	36	12.5	4	424	1696
V200	37	12.5	6	310	1860
V200	38	12.5	2	747	1494
V200	39	12.5	4	722	2888
V200	40	12.5	2	1102	2204
V200	41	12.5	3	706	2118
V200	42	12.5	2	315	630

RESUMO DO AÇO

AÇO	DIAM (mm)	C.TOTAL (m)	QUANT (Barras)	PESO (kg)
CA50	6.3	189.8	16	48.4
CA50	10.0	261	22	160.9
CA50	12.5	235.3	20	226.6
CA50	5.0	592.3	-	91.3
PESO TOTAL (kg)				
CA50		434		
CA60		91.3		

Volume de concreto (C-25) = 5.79 m³
Área de forma = 95.23 m²

LEITURA DAS ARMADURAS
SEM ESCALA - COTAS EM CENTÍMETROS

Tabela de Conversões e Pinos de Dobramento

AÇO	DIAM (mm)	DIAM (pol)	PINO (D) (cm)
CA60	5.0	3/16	3"
CA50	6.3	1/4	3"
CA50	8.0	5/16	4"
CA50	10.0	3/8	5"
CA50	12.5	1/2	6.5"
CA50	16.0	5/8	8"

Quantidades de Barras = 2 Barras
Número da Barra no Detalhamento = N3
Bitola = ø10.0mm ou 3/8"
Espaçamento entre as Barras = 15cm
Comprimento Total da Barra = 655cm
Dobra na Extremidade = 30cm
Comprimento Horizontal = 600cm

CARIMBOS E APROVAÇÕES:

PROJETO - RESPONSÁVEL TÉCNICO: _____ EXECUÇÃO - RESPONSÁVEL TÉCNICO: _____ ASSINATURA - PROPRIETÁRIO: (REPRESENTANTE) _____

REVISÃO	DATA	ALTERAÇÕES

PROJETO ESTRUTURAL

RUA: XV DE NOVEMBRO, Nº 737
CEP: 89160-015 -CENTRO
RIO DO SUL/SC
FONE/FAX: (47) 3531-4242
E-mail: amavi@amavi.org.br
http://www.amavi.org.br

AMAVI
ASSOCIAÇÃO DOS MUNICÍPIOS DO ALTO VALE DO ITAJAI

OBRA:
CEI Hanna Misfeld

PROPRIETÁRIO:
PREFEITURA MUNICIPAL DE AGROLÂNDIA

ENDEREÇO:
ALAMEDA TROMBUDO ALTO - BAIRRO TRÊS BARRAS -AGROLÂNDIA/SC

CONTEÚDO:
- DETALHAMENTO VIGAS 200

DESENHO:
EDUARDO FIGUEIREDO

ÁREA:
146.49m²

ESCALA:
INDICADA

DATA:
14/08/2020

FOLHA:
EST 07/07

TODOS OS DIREITOS RESERVADOS. PROIBIDA A REPRODUÇÃO PARCIAL OU TOTAL. DESENHO VÁLIDO SOMENTE ASSINADO PELO RESPONSÁVEL DO PROJETO.