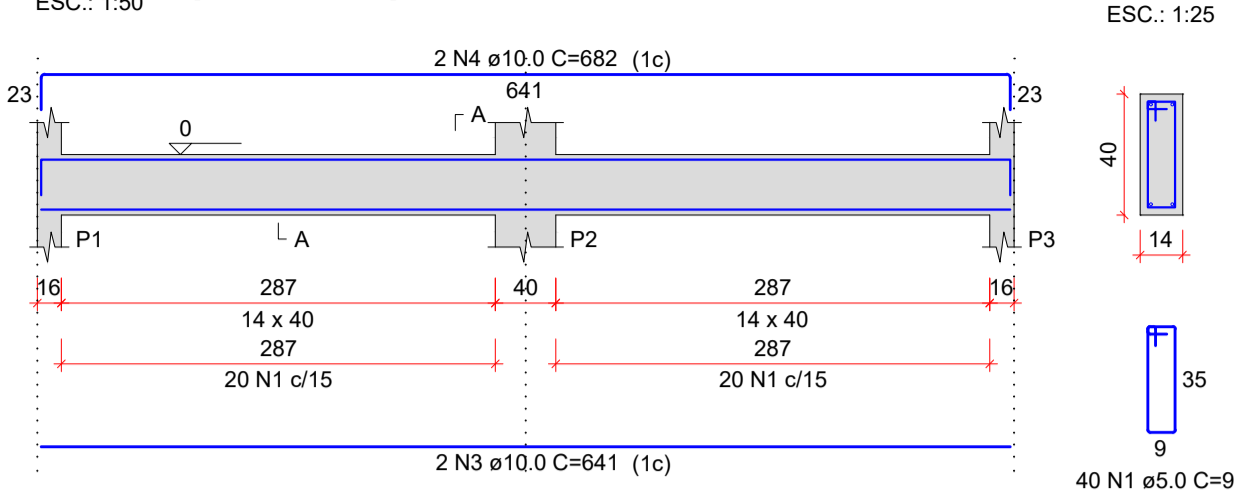
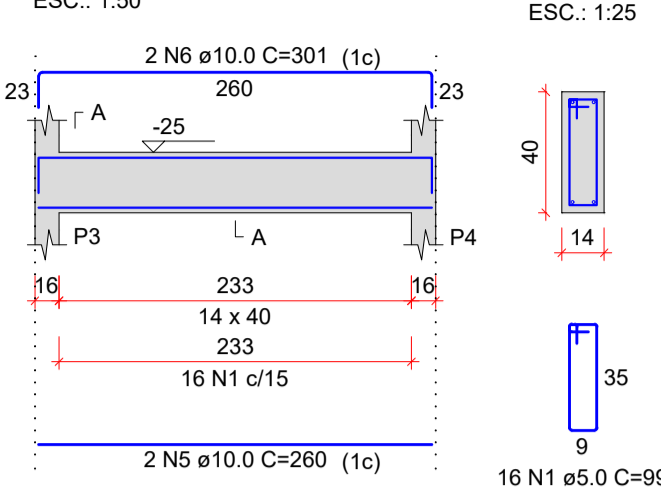


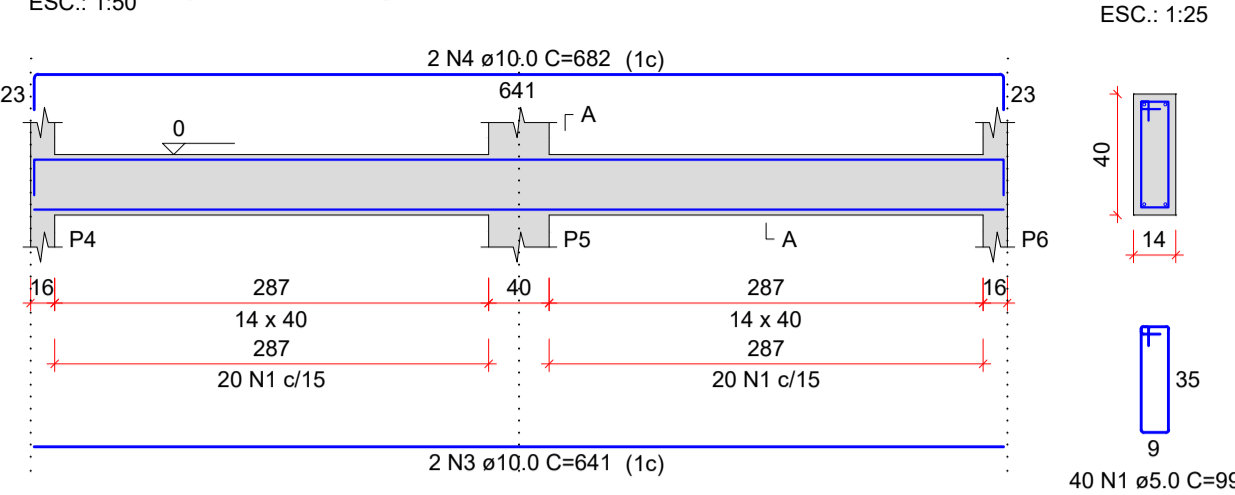
V100 (14 x 40)



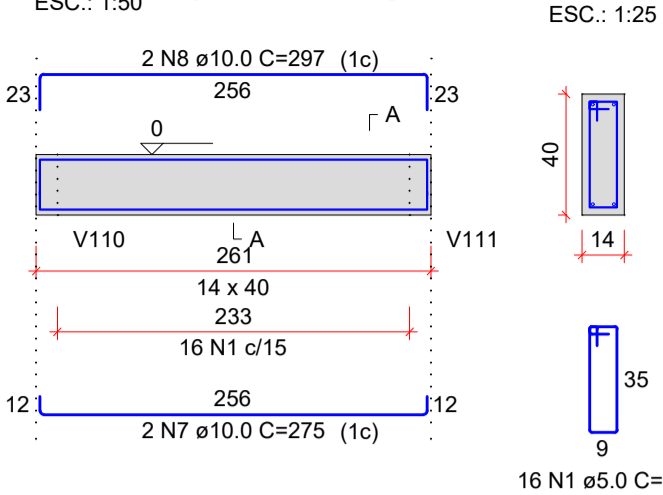
V101 (14 x 40)



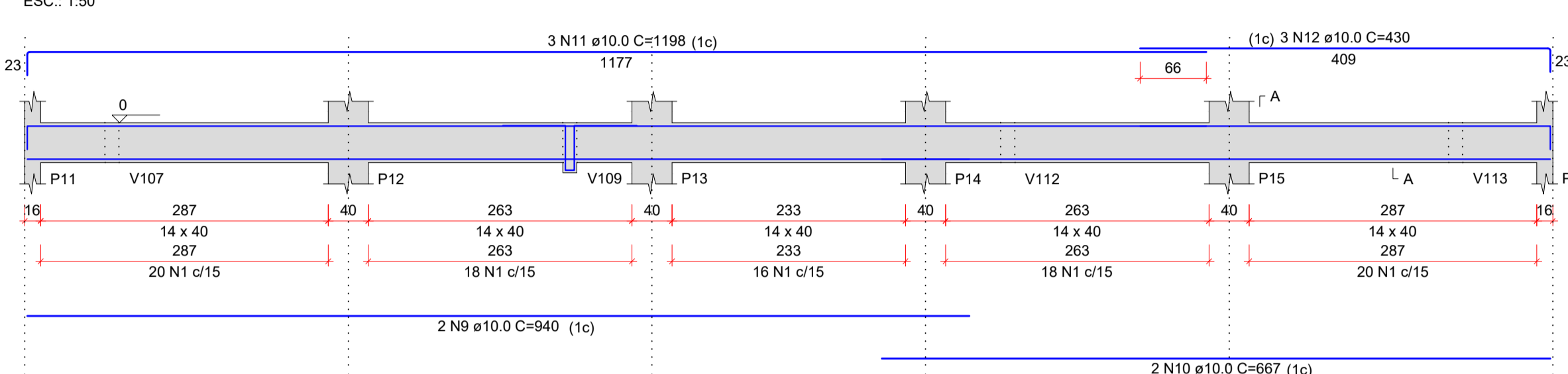
V102 (14 x 40)



V103 (14 x 40)

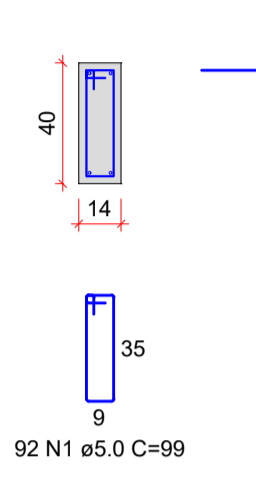


V104 (14 x 40)

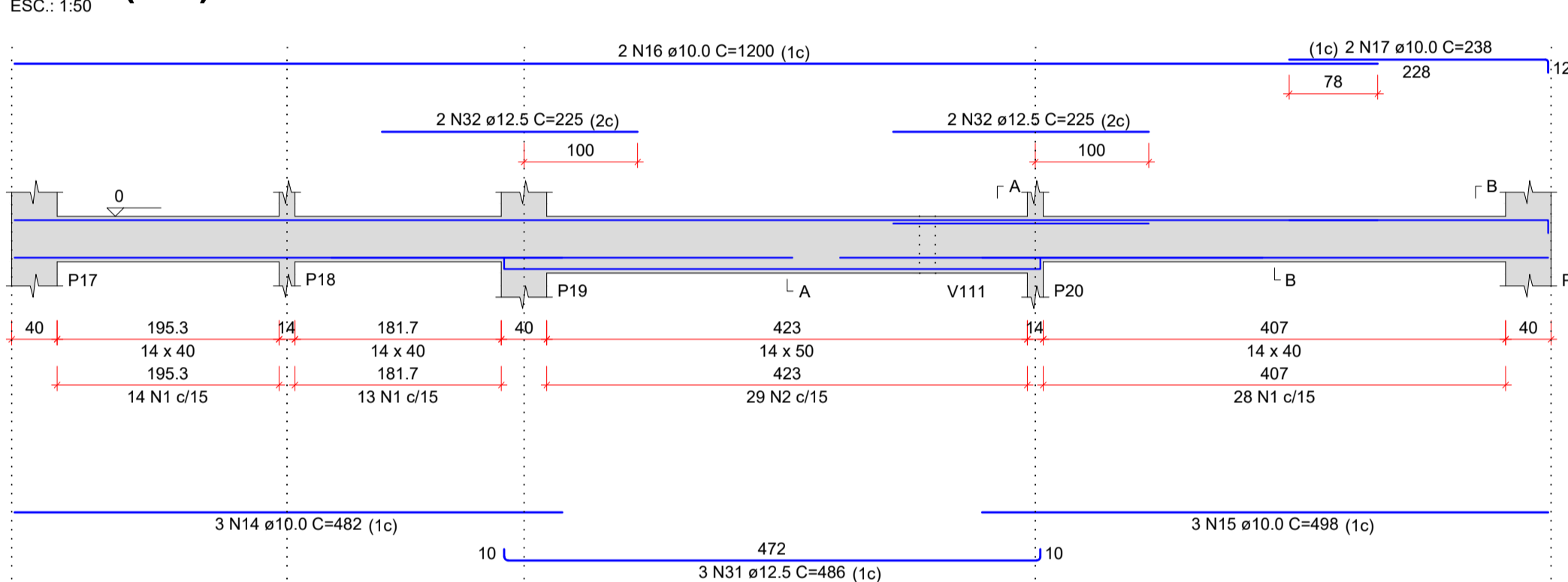


SEÇÃO A-A

SUSPENSÃO V109

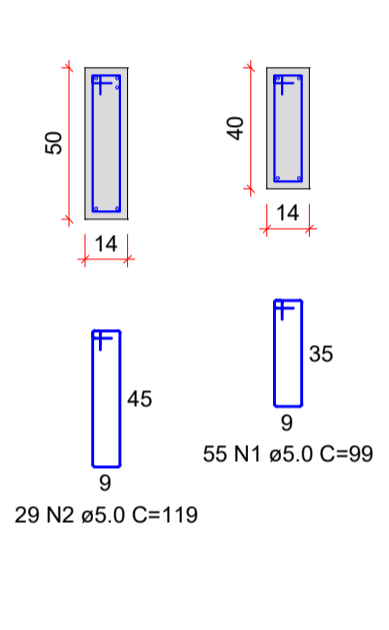


V105 (var)

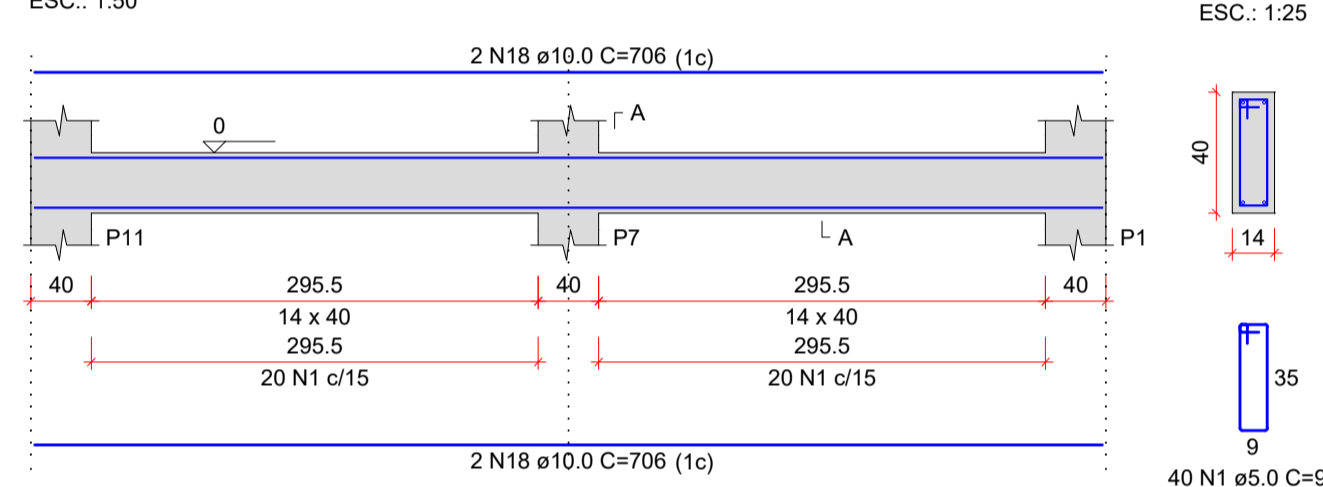


SEÇÃO A-A

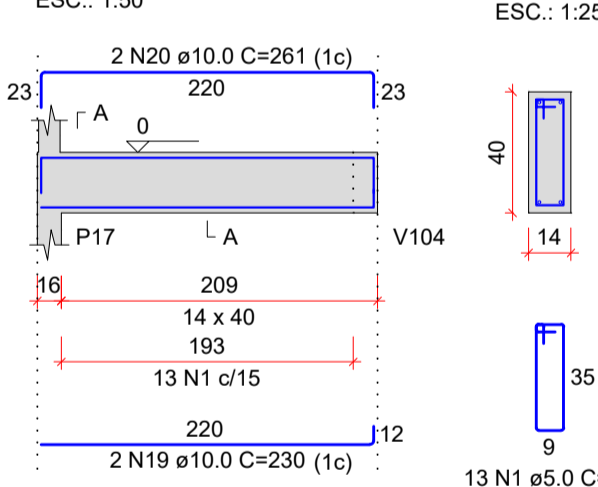
SEÇÃO B-B



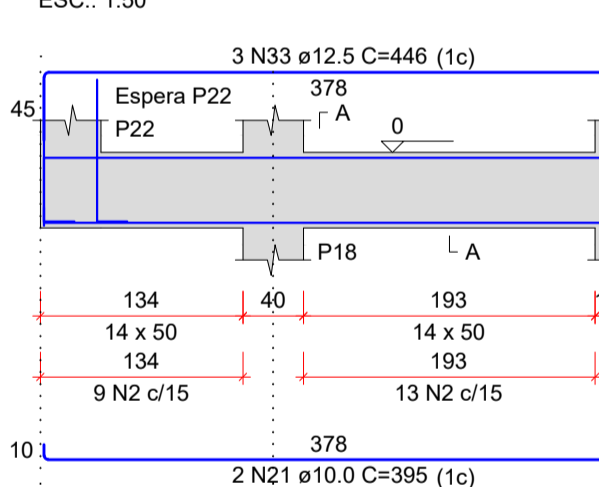
V106 (14 x 40)



V107 (14 x 40)

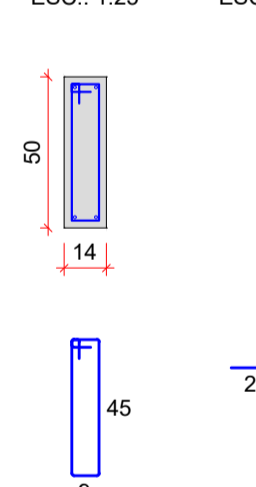


V108 (14 x 50)

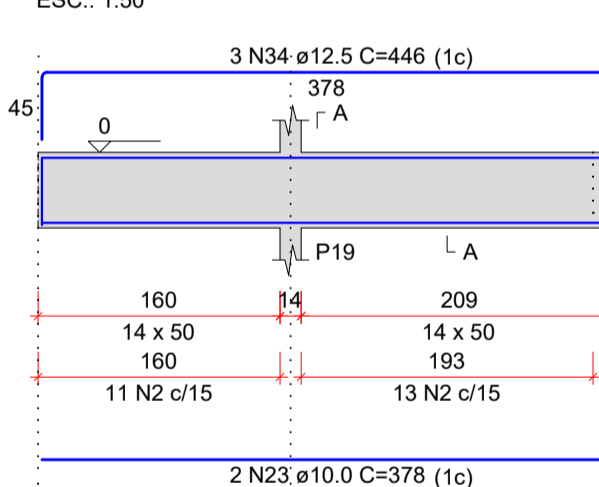


SEÇÃO A-A

ESPERA P22

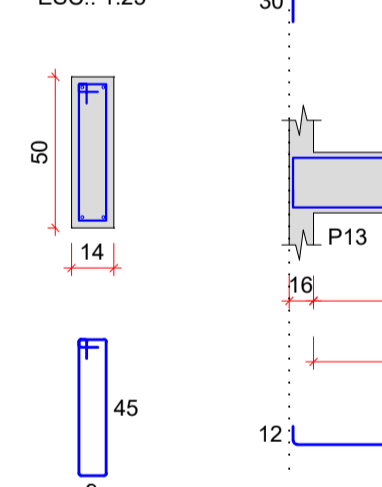


V109 (14 x 50)

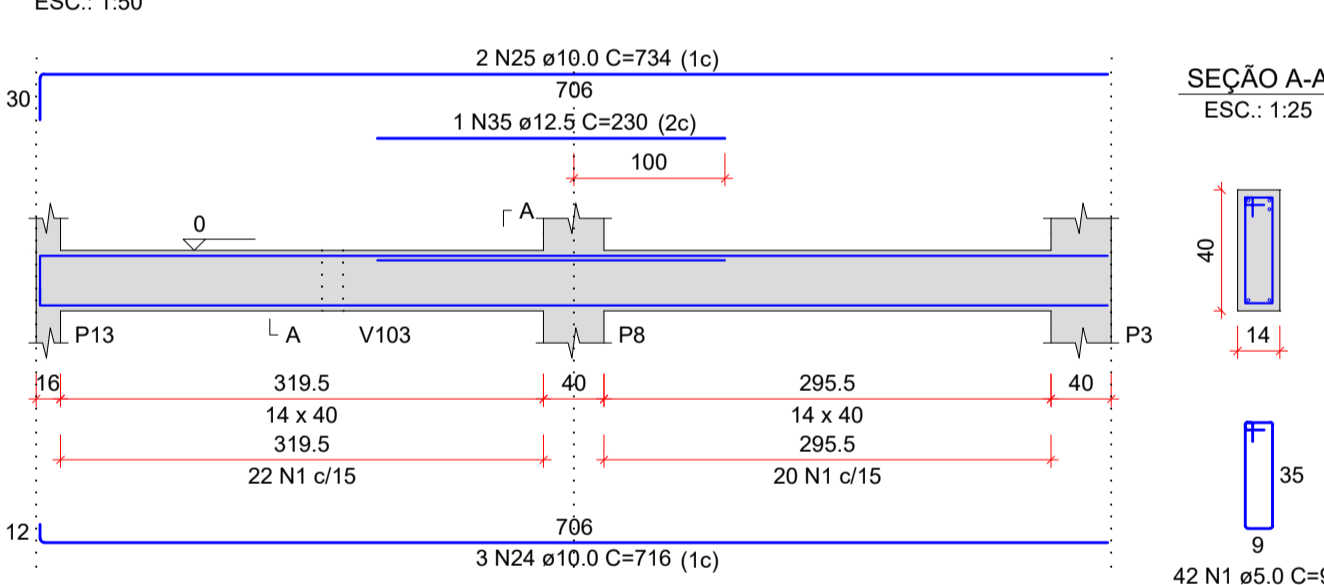


SEÇÃO A-A

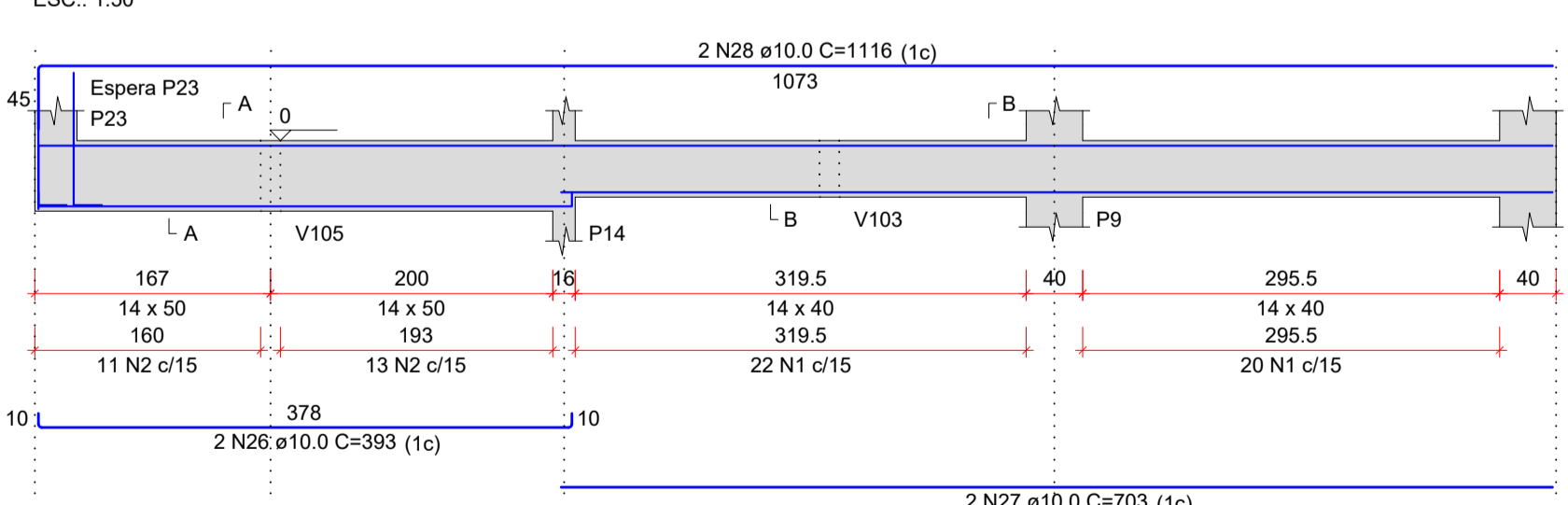
SEÇÃO A-A



V110 (14 x 40)



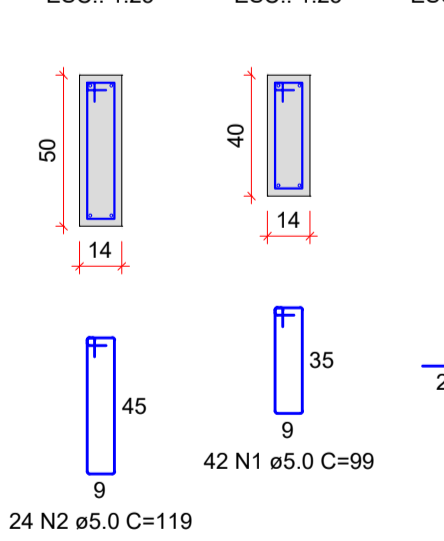
V111 (var)



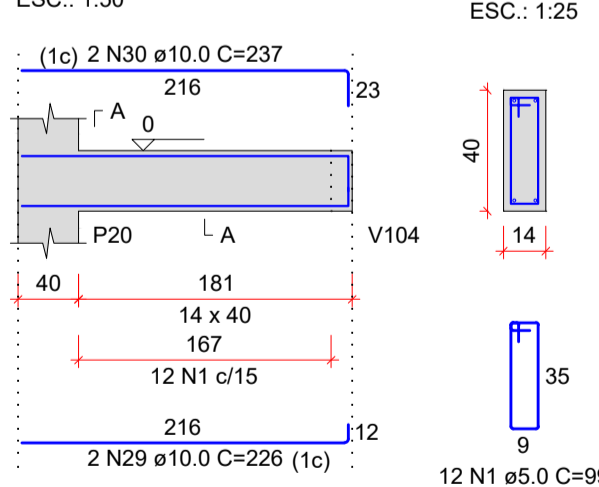
SEÇÃO A-A

SEÇÃO B-B

ESPERA P23

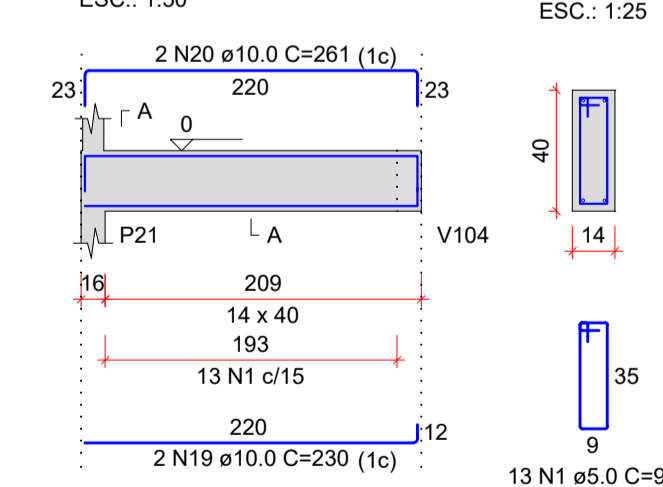


V112 (14 x 40)



SEÇÃO A-A

V113 (14 x 40)



SEÇÃO A-A

VIGAS 100 (BALDRAME)

Escala Indicada

RELAÇÃO DO AÇO					RESUMO DO AÇO			
AÇO	N	DIAM (mm)	QUANT	C.UNIT (cm)	C.TOTAL (m)	QUANT (Barras)	PESO (kg)	
V100								
V101								
V102								
V103								
V104								
V105								
V106								
V107								
V108								
V109								
V110								
V111								
CA60	1	5.0	421	99	41679			
CA50	2	5.0	99	119	11781			
	3	10.0	4	641	2564			
	4	10.0	4	682	2728			
	5	10.0	2	260	520			
	6	10.0	2	301	602			
	7	10.0	2	275	550			
	8	10.0	2	297	594			
	9	10.0	2	940	1880			
	10	10.0	2	667	1334			
	11	10.0	3	1198	3594			
	12	10.0	3	430	1290			
	13	10.0	1	214	214			
	14	10.0	3	482	1446			
	15	10.0	3	498	1494			
	16	10.0	2	1200	2400			
	17	10.0	2	238	476			
	18	10.0	4	706	2824			
	19	10.0	4	230	920			
	20	10.0	4	261	1044			
	21	10.0	2	395	790			
	22	10.0	10	112	1120			
	23	10.0	2	378	756			
	24	10.0	3	716	2148			
	25	10.0	2	734	1468			
	26	10.0	2	393	786			
	27	10.0	2	703	1406			
	28	10.0	2	1116	2232			
	29	10.0	2	226	452			
	30	10.0	2	237	474			
	31	12.5	3	486	1458			
	32	12.5	4	225	900			
	33	12.5	3	446	1338			
	34	12.5	3	446	1338			
	35	12.5	1	230	230			

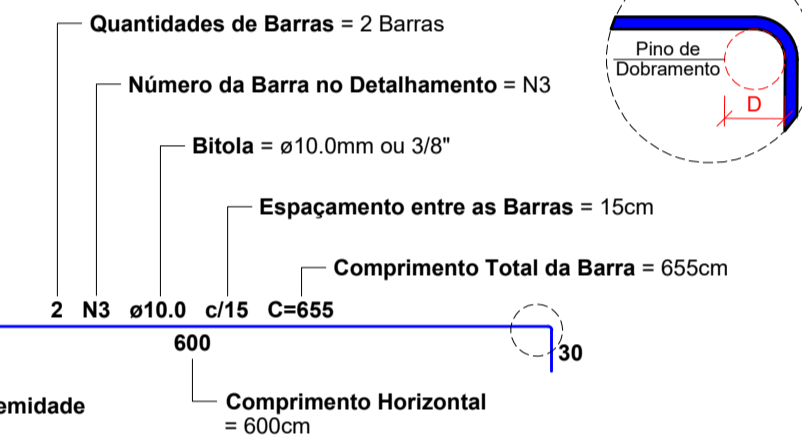
Volume de concreto (C-25) = 5.06 m³
Área de forma = 84.35 m²

LEITURA DAS ARMADURAS

SEM ESCALA - COTAS EM CENTÍMETROS

Tabela de Conversões e Pinos de Dobramento

AÇO	DIAM (mm)	DIAM (pol)	PINO (D) (cm)
CA60	5.0	3/16	3"
CA50	6.3	1/4	3
CA50	8.0	5/16	4
CA50	10.0	3/8	5
CA50	12.5	1/2	6.5
CA50	16.0	5/8	8



CARIMBOS E APROVAÇÕES:

PROJETO - RESPONSÁVEL TÉCNICO: EXECUÇÃO - RESPONSÁVEL TÉCNICO: ASSINATURA - PROPRIETÁRIO: (REPRESENTANTE)

REVISÃO DATA ALTERAÇÕES

PROJETO ESTRUTURAL

RUA: XV DE NOVEMBRO, Nº 737
CEP: 89160-015 -CENTRO
RIO DO SUL/SC
FONE/FAX: (47) 3531-4242
E-mail: amavi@amavi.org.br
http://www.amavi.org.br

OBRA: CEI Hanna Misfeld

PROPRIETÁRIO: PREFEITURA MUNICIPAL DE AGROLÂNDIA

ENDEREÇO: ALAMEDA TROMBUDO ALTO - BAIRRO TRÊS BARRAS -AGROLÂNDIA/SC

CONTEÚDO: - DETALHAMENTO VIGAS 100

DESENHO: EDUARDO FIGUEIREDO

ÁREA: 146.49m²

ESCALA: INDICADA

DATA: 14/08/2020

TODOS OS DIREITOS RESERVADOS. PROIBIDA A REPRODUÇÃO PARCIAL OU TOTAL. DESENHO VÁLIDO SOMENTE ASSINADO PELO RESPONSÁVEL DO PROJETO.

FOLHA: EST 06/07